

With and Without Mounting Lugs for Threaded Rigid and IMC Conduit

Application:

- Cast device boxes are installed to:
- accommodate wiring devices in a conduit system
 - act as pull boxes for conductors in a conduit system
 - provide openings to make splices and taps in conductors
 - provide access to conductors for maintenance and future system changes
 - connect conduit sections
 - FSY boxes for mounting surface devices on floor or bench (used with single gang covers)

Features:

- Internal green ground screw standard on boxes
- Suitable for use in wet locations when used with gasketed covers
- Mounting lugs standard on most boxes
- Tapered threaded hubs (NPT) with integral bushing
- Available for surface mounting (with mounting lugs) or flush mounting (without mounting lugs) as listed
- Available as shallow (FS) or deep (FD) configuration. Use FD if device to be enclosed exceeds 1 5/8" in depth
- Ample wiring room provided in either FS or FD configuration
- Wide selection of surface or flush covers available in three materials (sheet steel, *Feraloy*®, aluminum)
- Covers for flush mounting extend to conceal the rough plaster line
- Available in single gang and multi-gang configurations with hubs, and as blank bodies for drilled and tapped openings

Standard Materials:

- *Feraloy* iron alloy or copper-free aluminum.

Standard Finishes:

- *Feraloy* – electrogalvanized and aluminum acrylic paint
- Aluminum – natural

Options:

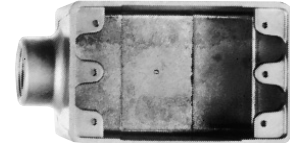
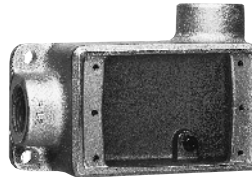
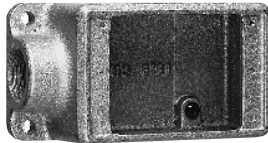
- Finishes:
Corro-free™ epoxy powder coat – add suffix S752

Size Ranges:

- Hubs – 1/2" to 1"

Certifications and Compliances:

- UL Standard: 514
- ANSI Standard: C33.84
- Fed. Spec.: W-C-5860
- CSA Standard: C22.2 No. 18



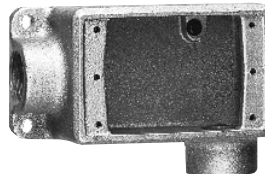
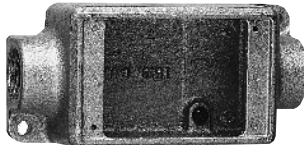
FS & FD

Size	Cat. #	Cat. #
1/2	FS1*	FD1**
3/4	FS2*	FD2**
1	FS3**	FD3**

Size	Cat. #	Cat. #
1/2	FSR1	FDR1
3/4	FSR2	FDR2**

Die Cast Aluminum†

Size	Cat. #	Cat. #
1/2	FS1-SA	FSC1-SA
3/4	FS2-SA	FSC2-SA



Size	Cat. #	Cat. #
1/2	FSC1*	FDC1**
3/4	FSC2*	FDC2**
1	FSC3**	FDC3**

Size	Cat. #	Cat. #
1/2	FSL1	FDL1
3/4	FSL2	FDL2**

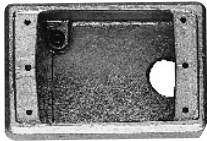
† Mounting lugs and ground screw are not offered with standard die cast box – add suffix SCA to Cat. No. for sand cast aluminum box with mounting lugs and ground screw. (Example: FS1-SCA)

* Available in sandcast copper-free aluminum – add suffix SCA to Cat. No.

** Available in sandcast copper-free aluminum – add suffix SA to Cat. No.

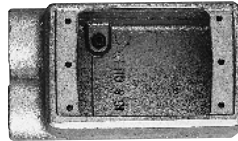
With and Without Mounting Lugs for Threaded Rigid and IMC Conduit

Cast Device Boxes
3F

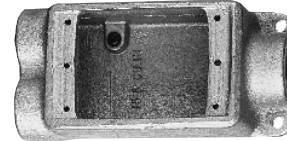


FS & FD

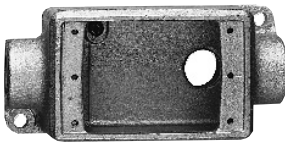
Size	Cat. # †	Cat. # †
1/2	FSA1	FDA1
3/4	FSA2	FDA2



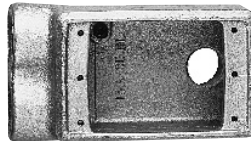
Size	Cat. # †	Cat. # †
1/2	FSS1*	FDD1
3/4	FSS2*	FDD2*
1	FSS3	FDD3



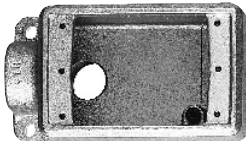
Size	Cat. #	Cat. #
1/2	FSCC1	FDCC1
3/4	FSCC2	FDCC2



Size	Cat. #
1/2	FSCA1
3/4	FSCA2

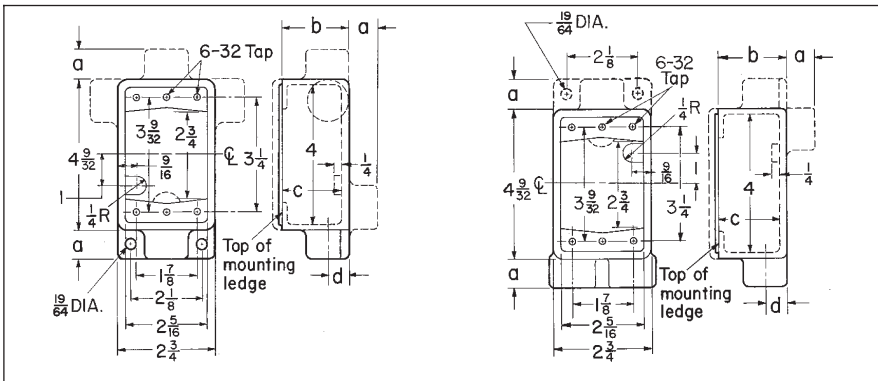


Size	Cat. # †
3/4	FSSA2



Size	Cat. #	Cat. #
1/2	FSLA1	FDLA1
3/4	FSLA2*	FDLA2

Dimensions



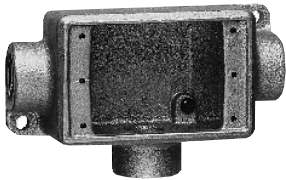
Series	Hub Size	a	b	c	d
FS	1/2	7/8	1 7/8	1 1/16	5/8
	3/4	7/8	1 7/8	1 1/16	3/4
	1	1	1 7/8	1 1/16	7/8
FD	1/2	7/8	2 1/16	2 1/2	5/8
	3/4	7/8	2 1/16	2 1/2	3/4
	1	1	2 1/16	2 1/2	7/8

* Available in copper-free aluminum; add suffix "SA".
† Mounting lugs not available.

Condulet® Single Gang Cast Device Boxes

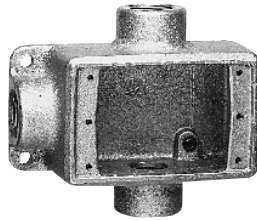
With and Without Mounting Lugs for Threaded Rigid and IMC Conduit

3F Cast Device Boxes

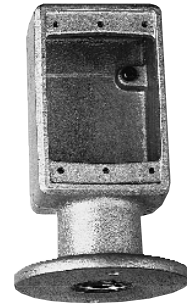


FS and FD

Size	Cat. #	Cat. #
1/2	FSCT1	FDCT1
3/4	FSCT2*	FDCT2*
1	FSCT3	FDCT3



Size	Cat. #	Cat. #
1/2	FST1*	FDT1
3/4	FST2*	FDT2
1		FDT3

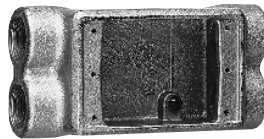


FSY

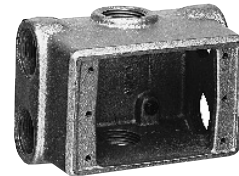
Description	Hub Size	Cat. # †
Single face	1	FSY311
Double face	1	FSY312



Size	Cat. #	Cat. #
1/2	FSX1	FDX1
3/4	FSX2	FDX2
1		FDX3



Size	Cat. # ‡
1/2	FSCD1
3/4	FSCD2



FDXC†

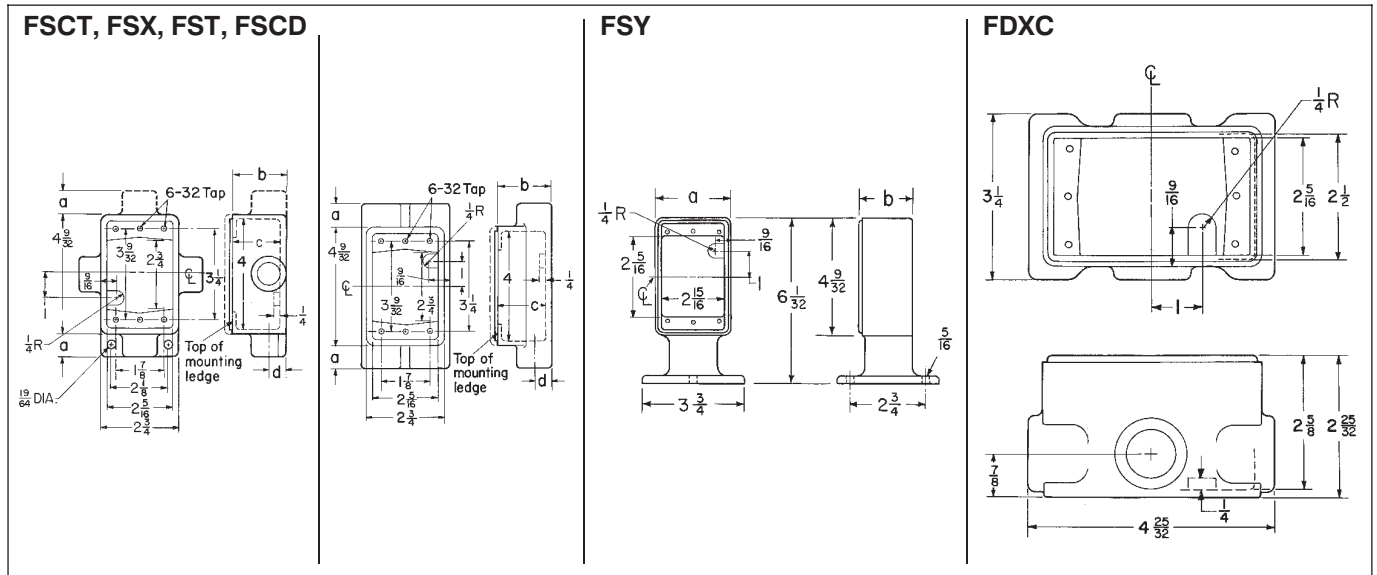
Hub Size	Cat. # ‡
3/4	FDXC219

† 6 Hubs – all 3/4" pipe tap.

* Available in copper-free aluminum; add suffix "SA".

‡ Not available with mounting lugs.

Dimensions



FSCT, FSX, FST, FSCD

Series	Hub Size	a	b	c	d
FS	1/2	7/8	1 7/8	1 11/16	5/8
	3/4	7/8	1 7/8	1 11/16	3/4
	1	1	1 7/8	1 11/16	7/8

FSY

Description	Hub Size	a	b
Single gang, single face	1	2 3/4	1 15/16
Single gang, double face	1	2 3/4	3 3/8

3F Condulet® Single Gang Cast Device Boxes

With and Without Mounting Lugs

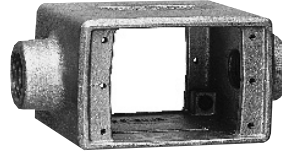
Accessories Pages 35 to 44

Cast Device Boxes
3F



FS Double Face

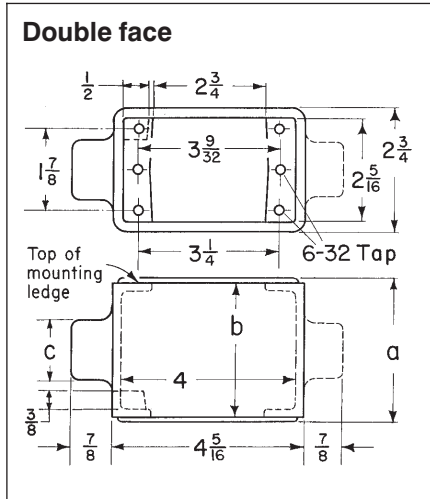
Size	Cat. # †
1/2	FS152
3/4	FS252



Double Face

Size	Cat. # †
1/2	FSC152
3/4	FSC252

Dimensions



Series	Hub Size	a	b	c
FS	1/2	3 ⁹ / ₁₆	3 ¹ / ₈	1 ¹ / ₄
	3/4	3 ¹¹ / ₁₆	3 ¹ / ₂	1 ¹ / ₂

† Mounting lugs not available.

Condulet® Multi-Gang Cast Device Boxes

With and Without Mounting Lugs for Threaded Rigid and IMC Conduit

3F Cast Device Boxes



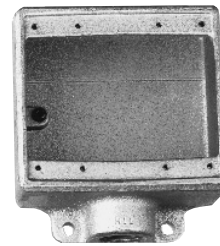
FS†
Two Gang Tandem

Size	Cat. #
1/2	FS17
3/4	FS27



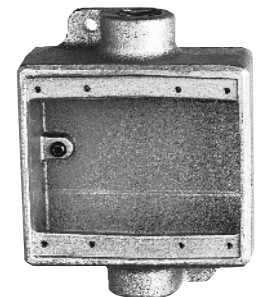
FSC†
Two Gang Tandem

Size	Cat. #
1/2	FSC17
3/4	FSC27



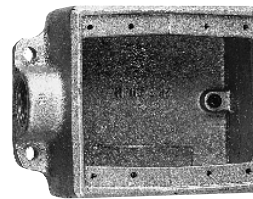
FS & FD
Two Gang

Size	Cat. #	Cat. #
1/2	FS12*	FD12
3/4	FS22*	FD22*
1	FS32	FD32



FSC & FDC
Two Gang

Size	Cat. #	Cat. #
1/2	FSC12	FDC12
3/4	FSC222	FDC222*
1	FSC32	FDC32



FSE
Two Gang

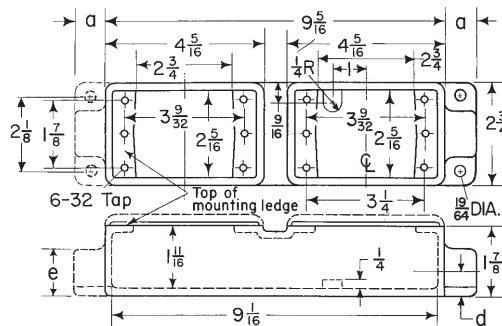
Size	Cat. #
3/4	FSE22

* Available in copper-free aluminum; add suffix "SA".

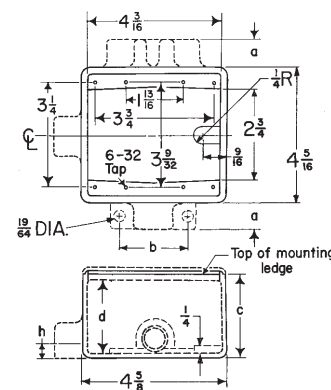
† Use single gang covers only.

Dimensions

Two gang tandem



Two gang



Two gang tandem

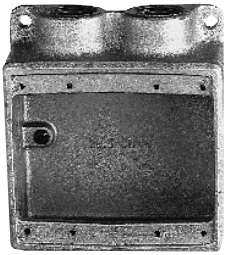
Series	Hub Size	a	d	e
FS	1/2	7/8	5/8	1 1/4
	3/4	7/8	3/4	1 1/2

Two gang

Series	Hub Size	a	b	c	d	h
FS	1/2	7/8	2 1/4	1 7/8	1 11/16	5/8
	3/4	7/8	2 1/4	1 7/8	1 11/16	3/4
	1	1	2 1/2	1 7/8	1 11/16	7/8
FD	1/2	7/8	2 1/4	2 11/16	2 1/2	5/8
	3/4	7/8	2 1/4	2 11/16	2 1/2	3/4
	1	1	2 1/2	2 11/16	2 1/2	7/8

With and Without Mounting Lugs for Threaded Rigid and IMC Conduit

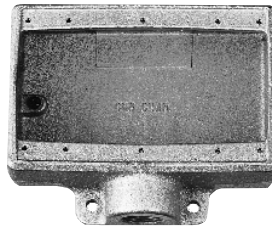
Cast Device Boxes
3F



FSS & FDS

Two Gang

Size	Cat. #	Cat. #
3/4	FSS222	FDS222



FS & FD

Three Gang

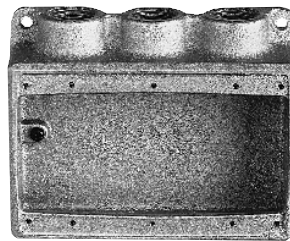
Size	Cat. #	Cat. #
3/4	FS23	FD23
1	FS33	



FSD

Two Gang

Size	Cat. #
3/4	FSD212*



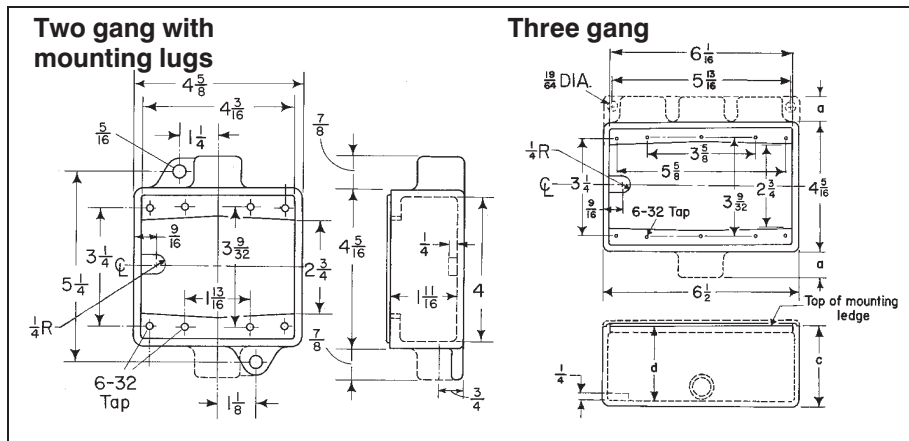
FSS

Three Gang

Size	Cat. #
3/4	FSS23

* Hubs on 2 hub side are 1/2".

Dimensions



Three gang

Series	Hub Size	a	c	d
FS	3/4	7/8	17/8	11 1/16
	1	1	17/8	11 1/16
FD	3/4	7/8	21 1/16	2 1/2