

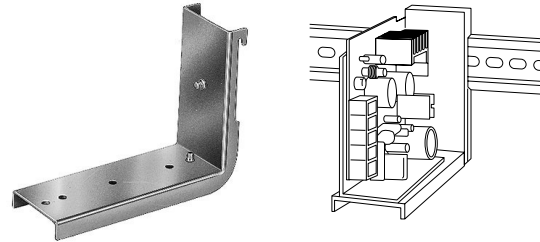
Accessories

Mounting Bracket (Optional)

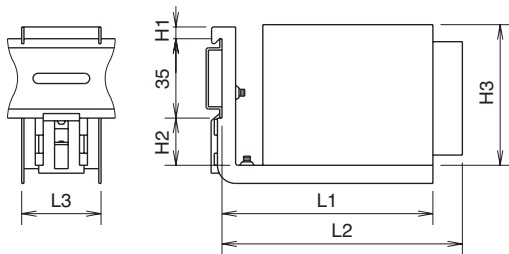
Model	Mounting Plate	L-shaped Bracket (1)	L-shaped Bracket (2)	Dimensions
PS3L-A/B	PS9Z-3E1B	PS9Z-3E2B	PS9Z-3E3B	See page L-19
PS3L-C	PS9Z-3E1C	PS9Z-3E2C	PS9Z-3E3C	
PS3L-D	PS9Z-3E1D	PS9Z-3E2D	PS9Z-3E3D	
PS3L-E	PS9Z-3L1F	PS9Z-3E2E	PS9Z-3E3E	
PS3L-F	PS9Z-3L1F	PS9Z-3E2F	PS9Z-3E3F	
PS3L-G	PS9Z-3L1G	—	—	

DIN-Rail Mounting Bracket (Optional)

Model	Part Number
PS3L-A	PS9Z-3E4C
PS3L-B	
PS3L-C	
PS3L-D	PS9Z-3E4D
PS3L-E	PS9Z-3E4F
PS3L-F	



DIN-rail mounting brackets are ordered separately from switching power supplies.

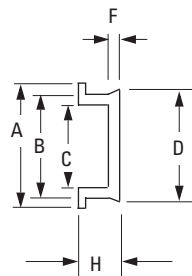
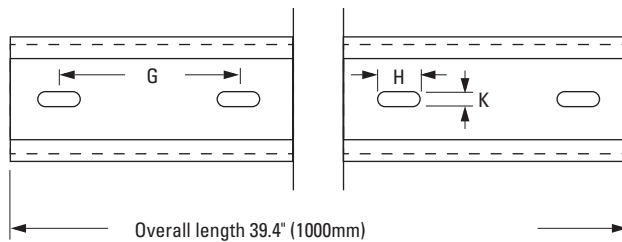


Part Number	Model	L1 (mm)	L2 (mm)	L3 (mm)	H1 (mm)	H2 (mm)	H3 (mm)
PS9Z-3E4C	PS3L-A	134	117	35	5.2	20.8	97
	PS3L-B						
	PS3L-C						
PS9Z-3E4D	PS3L-D	186	178.8	39.5	5.2	20.8	97
PS9Z-3E4F	PS3L-E	216.8	230.8	65	11.2	20	97
	PS3L-F						

Power Supplies

DIN Rail (Optional)

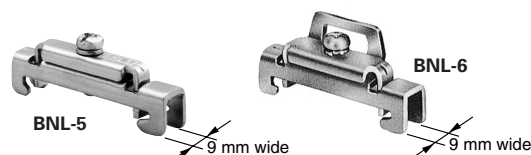
Part Number	Length	Material
BAA1000	1000 mm	Aluminum
BNDN1000	1000 mm	Aluminum



	Length in Inches (mm)
A	1.4" (35mm)
B	1.14" (29mm)
C	0.78" (23mm)
D	1.2" (31mm)
E	0.41" (10.5mm)
F	0.11" (3mm)
G	2" (51mm)
H	0.47" (12mm)
K	0.16" (4mm)

End Clip (Optional)

Item	Package No.
DIN Rail End Clip	BNL-5
	BNL-6



Installed on a DIN rail, the mounting clips prevent power supplies from sliding sideways.