

# Accessories

## Bison Shaft Mount Encoder

Part Number	Voltage	Pulses	Channels	Weight
P208-010-0012	5	12	1	1
P208-010-0030	5	30	1	1
P208-010-0100	5	100	1	1
P208-010-2030	5	30	2	1

All mounting hardware and stub shaft included

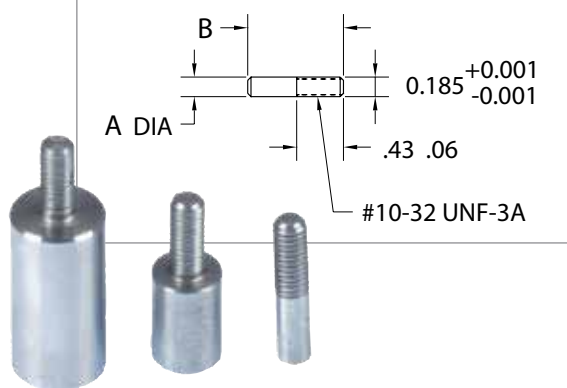


## Armature Shaft Extension Kit

Part Number	A	B	Weight
108-100-0316	.184/.186"	0.88	1
108-100-0416	.246/.248"	0.88	1
108-100-0516	.309/.311"	1.03	1
108-100-0616	.371/.373"	1.03	1
108-100-0716	.434/.436"	1.43	1
108-100-0816	.496/.498"	1.43	1

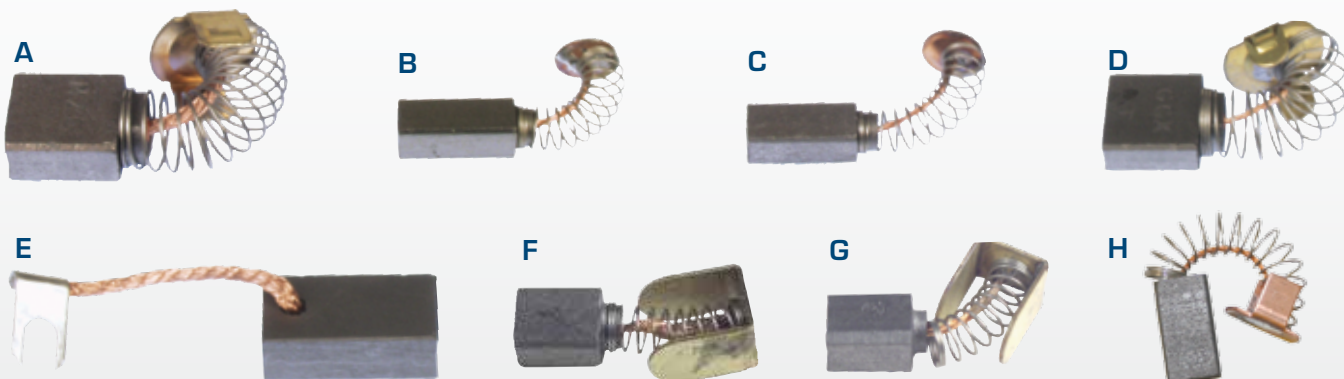
Threaded stub shafts fit Bison's PMDC Gearmotors under 1/2 HP.

Threaded Stub Shaft for 1/40-1/4HP DC Motors



## Replacement Brushes

Part Number	Key
P158-200-2001	A
P158-200-2600	B
P158-200-2615	C
P158-200-9000	D
P158-406-0008	E
P158-200-2624	F
P158-200-2690	G
P158-060-2000	H

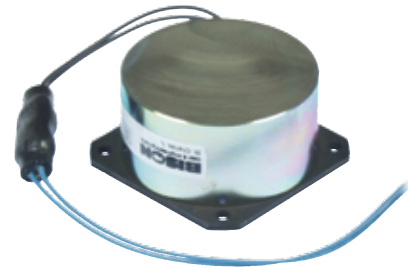


## Power-Off Brakes\*

Part Number	Voltage	Bolt Circle	Bore	Static Holding Torque (In-Lbs.)	Weight
P133-100-0003	115V	2.88	5/16"	3	2
P133-540-0007	115V	2.88	5/16"	7	2
P133-550-0018	115V	2.88	5/16"	18	2

All mounting hardware included

\* Power off brakes should be used with the AC gearmotors only. Does not mount to 1/4 HP-480 Series motors, 1/2 HP or 1 HP motors.



The holding torque listed is specified at the motor shaft. Motor shaft holding torque can be calculated by dividing the gear ratio into the static output shaft torque, less 5% per stage of gearing.

## Shaft Bushing 5/8" to 7/8"

Part Number	Weight
134-158-0200	1



## Mounting Base 100 Series

Part Number	Gearcase	Shipping Wt.
P125-100-9998	100	1

## Mounting Base 650 Series

Part Number	Gearcase	Shipping Wt.
P125-650-5000	650	1

## Mounting Base 746 Series

Part Number	Gearcase	Shipping Wt.
P125-746-0500	746	1

## Mounting Base 881 Series

Part Number	Gearcase	Shipping Wt.
P125-880-0003	881	1



P125-100-9998 shown.  
See website for additional mounting boxes.