

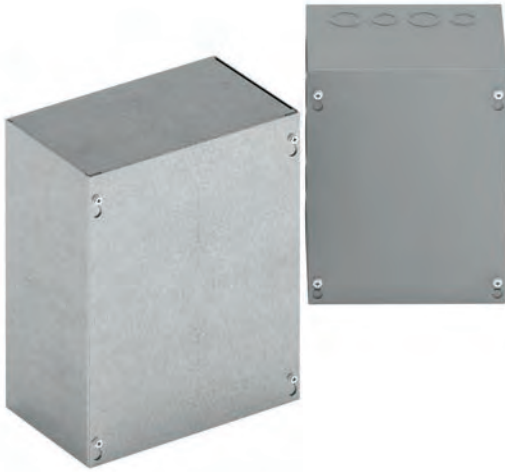
# Type 1, 3, & 3R Enclosures

## Junction Boxes

### Type 1 Screw Cover - Painted & Galvanized

#### Data and Illustration Sheet

Type 1, 3, & 3R Enclosures



#### Application

- Used as wiring boxes, junction and pull boxes
- Protects against contact with enclosed equipment

#### Standards

- UL 50 listed, Type 1
- CSA C22.2 No. 40 certified, Type 1
- Conforms to NEMA standard for Type 1

#### Finish

- Wash and phosphate undercoat or galvanized steel
- ANSI 61 gray acrylic electrocoat finish

#### Accessories

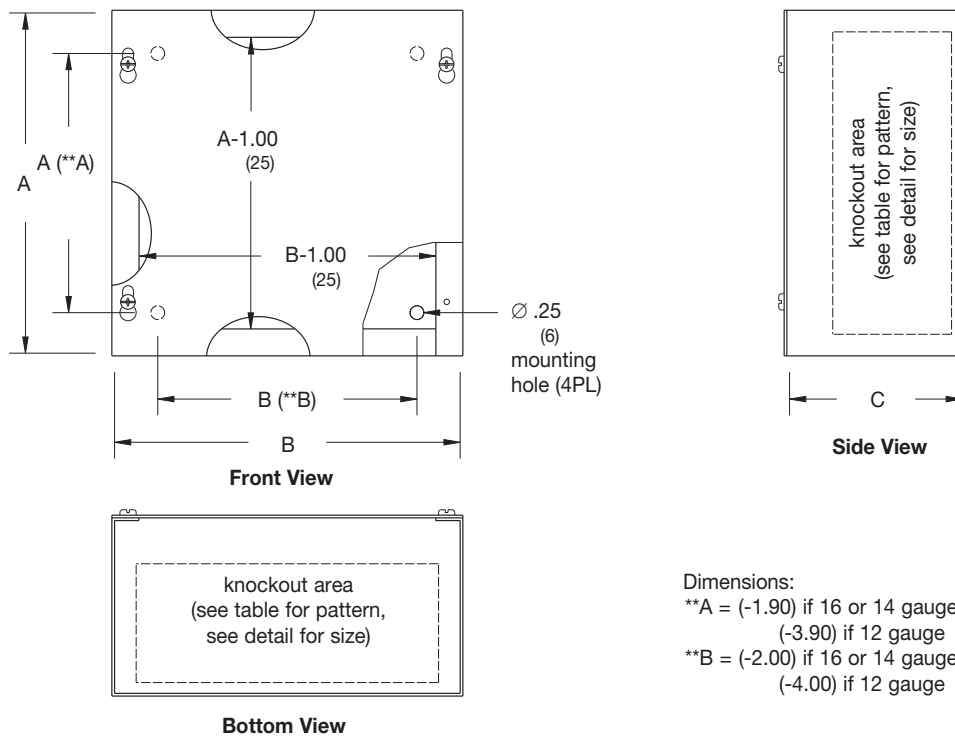
- Ground lug kit
- Touch-up paint
- See Accessories section

#### Construction

- Enclosure and cover are fabricated from code gauge steel or galvanized steel, (see table)
- Enclosure body has mounting holes on the back
- Enclosures are available with or without knockouts on the sides, top and bottom ends
- Cover is secured to the body with plated hex head combo screws
- Keyhole slots provided in the cover allow easy access to the inside without removing the screws
- #10-32 tapped hole provision for optional ground lug kit

#### Discount Schedule: A2

#### Subclass: ANO & AX1



#### Dimensions:

- \*\*A = (-1.90) if 16 or 14 gauge  
(-3.90) if 12 gauge
- \*\*B = (-2.00) if 16 or 14 gauge  
(-4.00) if 12 gauge

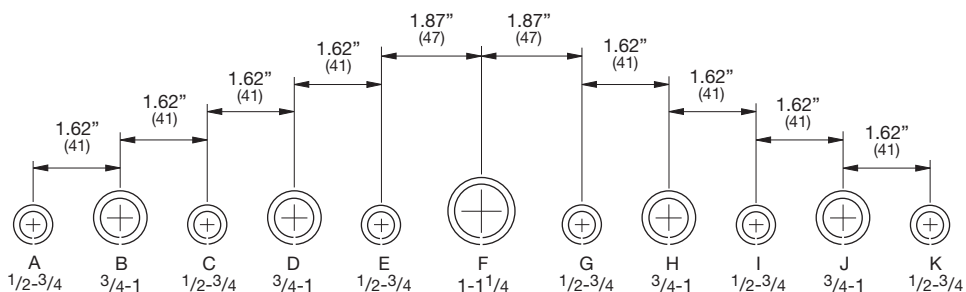
**Notes:** Cooper B-Line can provide special sizes, finishes and other modifications. Consult the factory for your special requirements. Dimensions are in inches. Millimeters shown are for reference only. Data subject to change without notice.

# Type 1, 3, & 3R Enclosures

## Junction Boxes Type 1 Screw Cover - Painted & Galvanized Catalog Number

Type 1, 3, & 3R Enclosures

| Enclosure Catalog Number |             |            |               | Enclosure Size                      |                 |    | Gauge     | Knockout Pattern<br>Each Side | Knockout Pattern<br>Top & Bottom |
|--------------------------|-------------|------------|---------------|-------------------------------------|-----------------|----|-----------|-------------------------------|----------------------------------|
| Painted                  |             | Galvanized |               | Height x Width x Depth<br>A x B x C |                 |    |           |                               |                                  |
| KO                       | No KO       | KO         | No KO         | in.                                 | mm              |    |           |                               |                                  |
| 443 SC                   | 443 SC NK   | 443 SCGV   | 443 SCGV NK   | 4.00 x 4.00 x 3.00                  | 102 x 102 x 76  | 16 | ⓐⓓ        | ⓐⓓ                            |                                  |
| 444 SC                   | 444 SC NK   | 444 SCGV   | 444 SCGV NK   | 4.00 x 4.00 x 4.00                  | 102 x 102 x 102 | 16 | ⓐⓓ        | ⓐⓓ                            |                                  |
| 644 SC                   | 644 SC NK   | 644 SCGV   | 644 SCGV NK   | 6.00 x 4.00 x 4.00                  | 152 x 102 x 102 | 16 | ⓐⓓⓔ       | ⓐⓓ                            |                                  |
| 663 SC                   | 663 SC NK   | 663 SCGV   | 663 SCGV NK   | 6.00 x 6.00 x 3.00                  | 152 x 152 x 76  | 16 | ⓐⓓⓔ       | ⓐⓓⓔ                           |                                  |
| 664 SC                   | 664 SC NK   | 664 SCGV   | 664 SCGV NK   | 6.00 x 6.00 x 4.00                  | 152 x 152 x 102 | 16 | ⓐⓓⓔ       | ⓐⓓⓔ                           |                                  |
| 863 SC                   | 863 SC NK   | 863 SCGV   | 863 SCGV NK   | 8.00 x 6.00 x 4.300                 | 203 x 152 x 76  | 16 | ⓐⓓⓔⓖⓗ     | ⓐⓓⓔ                           |                                  |
| 864 SC                   | 864 SC NK   | 864 SCGV   | 864 SCGV NK   | 8.00 x 6.00 x 4.00                  | 203 x 152 x 102 | 16 | ⓐⓓⓔⓖⓗ     | ⓐⓓⓔ                           |                                  |
| 884 SC                   | 884 SC NK   | 884 SCGV   | 884 SCGV NK   | 8.00 x 8.00 x 4.00                  | 203 x 203 x 102 | 16 | ⓐⓓⓔⓖⓗ     | ⓐⓓⓔⓖⓗ                         |                                  |
| --                       | 1064 SC NK  | --         | 1064 SCGV NK  | 10.00 x 6.00 x 4.00                 | 254 x 152 x 102 | 16 | --        | --                            |                                  |
| 1084 SC                  | 1084 SC NK  | 1084 SCGV  | 1084 SCGV NK  | 10.00 x 8.00 x 4.00                 | 254 x 203 x 102 | 16 | ⓐⓓⓔⓖⓗ     | ⓐⓓⓔⓖⓗ                         |                                  |
| 10104 SC                 | 10104 SC NK | 10104 SCGV | 10104 SCGV NK | 10.00 x 10.00 x 4.00                | 254 x 254 x 102 | 16 | ⓐⓓⓔⓖⓗ     | ⓐⓓⓔⓖⓗ                         |                                  |
| 1264 SC                  | 1264 SC NK  | --         | 1264 SCGV NK  | 12.00 x 6.00 x 4.00                 | 305 x 152 x 102 | 16 | ⓐⓓⓔⓖⓗⓓ    | ⓐⓓⓔ                           |                                  |
| 1284 SC                  | 1284 SC NK  | 1284 SCGV  | 1284 SCGV NK  | 12.00 x 8.00 x 4.00                 | 305 x 203 x 102 | 16 | ⓐⓓⓔⓖⓗⓓ    | ⓐⓓⓔⓖⓗ                         |                                  |
| 12104 SC                 | 12104 SC NK | 12104 SCGV | 12104 SCGV NK | 12.00 x 10.00 x 4.00                | 305 x 254 x 102 | 16 | ⓐⓓⓔⓖⓗⓓ    | ⓐⓓⓔⓖⓗⓓ                        |                                  |
| 12124 SC                 | 12124 SC NK | 12124 SCGV | 12124 SCGV NK | 12.00 x 12.00 x 4.00                | 305 x 305 x 102 | 16 | ⓐⓓⓔⓖⓗⓓ    | ⓐⓓⓔⓖⓗⓓ                        |                                  |
| --                       | 15154 SC NK | 15154 SCGV | --            | 15.00 x 15.00 x 4.00                | 381 x 381 x 102 | 16 | ⓐⓓⓔⓖⓗⓓⓔ   | ⓐⓓⓔⓖⓗⓓⓔ                       |                                  |
| 16124 SC                 | 16124 SC NK | 16124 SCGV | 16124 SCGV NK | 16.00 x 12.00 x 4.00                | 406 x 305 x 102 | 16 | ⓐⓓⓔⓖⓗⓓⓔ   | ⓐⓓⓔⓖⓗⓓ                        |                                  |
| 16164 SC                 | 16164 SC NK | 16164 SCGV | --            | 16.00 x 16.00 x 4.00                | 406 x 406 x 102 | 16 | ⓐⓓⓔⓖⓗⓓⓔ   | ⓐⓓⓔⓖⓗⓓⓔ                       |                                  |
| 18124 SC                 | 18124 SC NK | 18124 SCGV | 18124 SCGV NK | 18.00 x 12.00 x 4.00                | 457 x 305 x 102 | 16 | ⓐⓓⓔⓖⓗⓓⓔⓖⓗ | ⓐⓓⓔⓖⓗⓓ                        |                                  |
| --                       | 18154 SC NK | 18154 SCGV | --            | 18.00 x 15.00 x 4.00                | 457 x 381 x 102 | 16 | ⓐⓓⓔⓖⓗⓓⓔⓖⓗ | ⓐⓓⓔⓖⓗⓓⓔ                       |                                  |
| 18184 SC                 | 18184 SC NK | 18184 SCGV | 18184 SCGV NK | 18.00 x 18.00 x 4.00                | 457 x 457 x 102 | 16 | ⓐⓓⓔⓖⓗⓓⓔⓖⓗ | ⓐⓓⓔⓖⓗⓓⓔⓖⓗ                     |                                  |
| 24124 SC                 | 24124 SC NK | 24124 SCGV | --            | 24.00 x 12.00 x 4.00                | 610 x 305 x 102 | 16 | ⓐⓓⓔⓖⓗⓓⓔⓖⓗ | ⓐⓓⓔⓖⓗⓓⓔ                       |                                  |
| --                       | 24184 SC NK | 24184 SCGV | --            | 24.00 x 18.00 x 4.00                | 610 x 457 x 102 | 16 | ⓐⓓⓔⓖⓗⓓⓔⓖⓗ | ⓐⓓⓔⓖⓗⓓⓔⓖⓗ                     |                                  |
| 24244 SC                 | 24244 SC NK | 24244 SCGV | 24244 SCGV NK | 24.00 x 24.00 x 4.00                | 610 x 610 x 102 | 14 | ⓐⓓⓔⓖⓗⓓⓔⓖⓗ | ⓐⓓⓔⓖⓗⓓⓔⓖⓗ                     |                                  |
| --                       | 30184 SC NK | 30184 SCGV | 30184 SCGV NK | 30.00 x 18.00 x 4.00                | 762 x 457 x 102 | 16 | ⓐⓓⓔⓖⓗⓓⓔⓖⓗ | ⓐⓓⓔⓖⓗⓓⓔⓖⓗ                     |                                  |
| 30244 SC                 | 30244 SC NK | 30244 SCGV | 30244 SCGV NK | 30.00 x 24.00 x 4.00                | 762 x 610 x 102 | 14 | ⓐⓓⓔⓖⓗⓓⓔⓖⓗ | ⓐⓓⓔⓖⓗⓓⓔⓖⓗ                     |                                  |
| -                        | 30304 SC NK | -          | 30304 SCGV NK | 30.00 x 30.00 x 4.00                | 762 x 762 x 102 | 12 | --        | --                            |                                  |



### Conduit Sizes

### Knockout Detail

Note: See table for applicable knockout pattern.

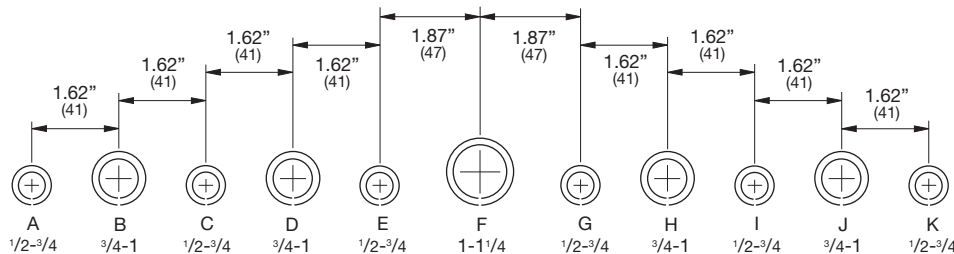
Notes: Dimensions are in inches. Millimeters shown are for reference only. Data subject to change without notice.

# Type 1, 3, & 3R Enclosures

## Junction Boxes Type 1 Screw Cover - Painted & Galvanized Catalog Number

Type 1, 3, & 3R Enclosures

| Enclosure Catalog Number |             |            |               | Enclosure Size         |                   | Gauge | Knockout Pattern    | Knockout Pattern    |
|--------------------------|-------------|------------|---------------|------------------------|-------------------|-------|---------------------|---------------------|
| Painted                  |             | Galvanized |               | Height x Width x Depth |                   |       |                     |                     |
| KO                       | No KO       | KO         | No KO         | in.                    | mm                |       |                     |                     |
| 666 SC                   | 666 SC NK   | 666 SCGV   | 666 SCGV NK   | 6.00 x 6.00 x 6.00     | 152 x 152 x 152   | 16    | (C D E)             | (C D E)             |
| 866 SC                   | 866 SC NK   | 866 SCGV   | 866 SCGV NK   | 8.00 x 6.00 x 6.00     | 203 x 152 x 152   | 16    | (G H I J)           | (C D E)             |
| 886 SC                   | 886 SC NK   | 886 SCGV   | 886 SCGV NK   | 8.00 x 8.00 x 6.00     | 203 x 203 x 152   | 16    | (G H I J)           | (G H I J)           |
| 1086 SC                  | 1086 SC NK  | 1086 SCGV  | 1086 SCGV NK  | 10.00 x 8.00 x 6.00    | 254 x 203 x 152   | 16    | (D E F G H)         | (G H I J)           |
| 10106 SC                 | 10106 SC NK | 10106 SCGV | 10106 SCGV NK | 10.00 x 10.00 x 6.00   | 254 x 254 x 152   | 16    | (D E F G H)         | (D E F G H)         |
| --                       | 1266 SC NK  | --         | --            | 12.00 x 6.00 x 6.00    | 305 x 152 x 152   | 16    | --                  | --                  |
| --                       | 1286 SC NK  | --         | 1286 SCGV NK  | 12.00 x 8.00 x 6.00    | 305 x 203 x 152   | 16    | --                  | --                  |
| 12106 SC                 | 12106 SC NK | 12106 SCGV | 12106 SCGV NK | 12.00 x 10.00 x 6.00   | 305 x 254 x 152   | 16    | (D E F G H)         | (D E F G H)         |
| 12126 SC                 | 12126 SC NK | 12126 SCGV | 12126 SCGV NK | 12.00 x 12.00 x 6.00   | 305 x 305 x 152   | 16    | (D E F G H)         | (D E F G H)         |
| --                       | 15156 SC NK | --         | 15156 SCGV NK | 15.00 x 15.00 x 6.00   | 381 x 381 x 152   | 16    | --                  | --                  |
| 16126 SC                 | 16126 SC NK | 16126 SCGV | 16126 SCGV NK | 16.00 x 12.00 x 6.00   | 406 x 305 x 152   | 16    | (C D E F G H I)     | (D E F G H)         |
| 16166 SC                 | 16166 SC NK | 16166 SCGV | 16166 SCGV NK | 16.00 x 16.00 x 6.00   | 406 x 406 x 152   | 16    | (C D E F G H I)     | (B C D E F G H I J) |
| 18126 SC                 | 18126 SC NK | 18126 SCGV | 18126 SCGV NK | 18.00 x 12.00 x 6.00   | 457 x 305 x 152   | 16    | (B C D E F G H I J) | (D E F G H)         |
| --                       | 18156 SC NK | --         | 18156 SCGV NK | 18.00 x 15.00 x 6.00   | 457 x 381 x 152   | 16    | --                  | --                  |
| 18186 SC                 | 18186 SC NK | 18186 SCGV | 18186 SCGV NK | 18.00 x 18.00 x 6.00   | 457 x 457 x 152   | 16    | (B C D E F G H I J) | (B C D E F G H I J) |
| --                       | 24126 SC NK | --         | 24126 SCGV NK | 24.00 x 12.00 x 6.00   | 610 x 305 x 152   | 16    | --                  | --                  |
| 24186 SC                 | 24186 SC NK | 24186 SCGV | 24186 SCGV NK | 24.00 x 18.00 x 6.00   | 610 x 457 x 152   | 16    | (B C D E F G H I J) | (B C D E F G H I J) |
| --                       | 24206 SC NK | --         | 24206 SCGV NK | 24.00 x 20.00 x 6.00   | 610 x 508 x 152   | 14    | --                  | --                  |
| 24246 SC                 | 24246 SC NK | 24246 SCGV | 24246 SCGV NK | 24.00 x 24.00 x 6.00   | 610 x 610 x 152   | 14    | (B C D E F G H I J) | (B C D E F G H I J) |
| --                       | 30186 SC NK | --         | 30186 SCGV NK | 30.00 x 18.00 x 6.00   | 762 x 457 x 152   | 16    | --                  | --                  |
| 30246 SC                 | 30246 SC NK | 30246 SCGV | 30246 SCGV NK | 30.00 x 24.00 x 6.00   | 762 x 610 x 152   | 14    | (B C D E F G H I J) | (B C D E F G H I J) |
| --                       | 30306 SC NK | --         | 30306 SCGV NK | 30.00 x 30.00 x 6.00   | 762 x 762 x 152   | 12    | --                  | --                  |
| 36246 SC                 | 36246 SC NK | --         | 36246 SCGV NK | 36.00 x 24.00 x 6.00   | 914 x 310 x 152   | 14    | (B C D E F G H I J) | (B C D E F G H I J) |
| --                       | 36306 SC NK | --         | 36306 SCGV NK | 36.00 x 30.00 x 6.00   | 914 x 762 x 152   | 12    | --                  | --                  |
| --                       | 36366 SC NK | --         | 36366 SCGV NK | 36.00 x 36.00 x 6.00   | 914 x 914 x 152   | 12    | --                  | --                  |
| --                       | 48366 SC NK | --         | 48366 SCGV NK | 48.00 x 36.00 x 6.00   | 1219 x 914 x 152  | 12    | --                  | --                  |
| --                       | 48486 SC NK | --         | 48486 SCGV NK | 48.00 x 48.00 x 6.00   | 1219 x 1219 x 152 | 12    | --                  | --                  |
| 888 SC                   | 888 SC NK   | 888 SCGV   | 888 SCGV NK   | 8.00 x 8.00 x 8.00     | 203 x 203 x 203   | 16    | (G H I J)           | (G H I J)           |
| --                       | 10108 SC NK | --         | 10108 SCGV NK | 10.00 x 10.00 x 8.00   | 254 x 254 x 203   | 16    | --                  | --                  |
| 12128 SC                 | 12128 SC NK | --         | 12128 SCGV NK | 12.00 x 12.00 x 8.00   | 305 x 305 x 203   | 16    | (D E F G H)         | (D E F G H)         |
| 16128 SC                 | 16128 SC NK | --         | 16128 SCGV NK | 16.00 x 12.00 x 8.00   | 406 x 305 x 203   | 16    | (C D E F G H I)     | (D E F G H)         |
| 18128 SC                 | 18128 SC NK | --         | 18128 SCGV NK | 18.00 x 12.00 x 8.00   | 457 x 305 x 203   | 16    | (B C D E F G H I J) | (D E F G H)         |
| 18188 SC                 | 18188 SC NK | --         | 18188 SCGV NK | 18.00 x 18.00 x 8.00   | 457 x 457 x 203   | 16    | (B C D E F G H I J) | (B C D E F G H I J) |
| 24128 SC                 | 24128 SC NK | --         | 24128 SCGV NK | 24.00 x 12.00 x 8.00   | 610 x 305 x 203   | 16    | (B C D E F G H I J) | (D E F G H)         |
| 24188 SC                 | 24188 SC NK | --         | 24188 SCGV NK | 24.00 x 18.00 x 8.00   | 610 x 457 x 203   | 16    | (B C D E F G H I J) | (B C D E F G H I J) |
| --                       | 24208 SC NK | --         | 24208 SCGV NK | 24.00 x 20.00 x 8.00   | 610 x 508 x 203   | 14    | --                  | --                  |
| 24248 SC                 | 24248 SC NK | --         | 24248 SCGV NK | 24.00 x 24.00 x 8.00   | 610 x 610 x 203   | 14    | (B C D E F G H I J) | (B C D E F G H I J) |
| 30248 SC                 | 30248 SC NK | 30248 SCGV | 30248 SCGV NK | 30.00 x 24.00 x 8.00   | 762 x 610 x 203   | 14    | (B C D E F G H I J) | (B C D E F G H I J) |
| --                       | 30308 SC NK | --         | 30308 SCGV NK | 30.00 x 30.00 x 8.00   | 762 x 762 x 203   | 12    | --                  | --                  |
| 36248 SC                 | 36248 SC NK | --         | 36248 SCGV NK | 36.00 x 24.00 x 8.00   | 914 x 610 x 203   | 14    | (B C D E F G H I J) | (B C D E F G H I J) |
| --                       | 36308 SC NK | --         | 36308 SCGV NK | 36.00 x 30.00 x 8.00   | 914 x 762 x 203   | 14    | --                  | --                  |



**Conduit Sizes Knockout Detail - Note:** See table for applicable knockout pattern.

**Notes:** Dimensions are in inches. Millimeters shown are for reference only. Data subject to change without notice.

# Type 1, 3, & 3R Enclosures

## Junction Boxes Type 1 Screw Cover - Painted & Galvanized Catalog Number

| Enclosure Catalog Number |              |            |                | Enclosure Size                      |                   | Gauge | Knockout Pattern | Knockout Pattern |           |              |
|--------------------------|--------------|------------|----------------|-------------------------------------|-------------------|-------|------------------|------------------|-----------|--------------|
| Painted                  |              | Galvanized |                | Height x Width x Depth<br>A x B x C |                   |       |                  |                  | Each Side | Top & Bottom |
| KO                       | No KO        | KO         | No KO          | in.                                 | mm                |       |                  |                  |           |              |
| --                       | 121210 SC NK | --         | 121210 SCGV NK | 12.00 x 12.00 x 10.00               | 305 x 305 x 254   | 16    | --               | --               |           |              |
| 181210 SC                | 181210 SC NK | --         | 181210 SCGV NK | 18.00 x 12.00 x 10.00               | 457 x 305 x 254   | 16    | ⓀⓁⓍⓁⓍⓁⓍⓁⓍⓁⓍ      | ⓀⓁⓍⓁⓍⓁⓍⓁⓍ        |           |              |
| 181810 SC                | 181810 SC NK | --         | 181810 SCGV NK | 18.00 x 18.00 x 10.00               | 457 x 457 x 254   | 16    | ⓀⓁⓍⓁⓍⓁⓍⓁⓍⓁⓍ      | ⓀⓁⓍⓁⓍⓁⓍⓁⓍⓁⓍ      |           |              |
| --                       | 241210 SC NK | --         | 241210 SCGV NK | 24.00 x 12.00 x 10.00               | 610 x 305 x 254   | 16    | --               | --               |           |              |
| 241810 SC                | 241810 SC NK | --         | 241810 SCGV NK | 24.00 x 18.00 x 10.00               | 610 x 457 x 254   | 16    | ⓀⓁⓍⓁⓍⓁⓍⓁⓍⓁⓍ      | ⓀⓁⓍⓁⓍⓁⓍⓁⓍⓁⓍ      |           |              |
| 242410 SC                | 242410 SC NK | --         | 242410 SCGV NK | 24.00 x 24.00 x 10.00               | 610 x 610 x 254   | 14    | ⓀⓁⓍⓁⓍⓁⓍⓁⓍⓁⓍ      | ⓀⓁⓍⓁⓍⓁⓍⓁⓍⓁⓍ      |           |              |
| --                       | 302410 SC NK | --         | 302410 SCGV NK | 30.00 x 24.00 x 10.00               | 762 x 610 x 254   | 14    | --               | --               |           |              |
| --                       | 303010 SC NK | --         | 303010 SCGV NK | 30.00 x 30.00 x 10.00               | 762 x 762 x 254   | 12    | --               | --               |           |              |
| --                       | 362410 SC NK | --         | 362410 SCGV NK | 36.00 x 24.00 x 10.00               | 914 x 610 x 254   | 14    | --               | --               |           |              |
| --                       | 363610 SC NK | --         | 363610 SCGV NK | 36.00 x 36.00 x 10.00               | 914 x 914 x 254   | 14    | --               | --               |           |              |
| --                       | 121212 SC NK | --         | 121212 SCGV NK | 12.00 x 12.00 x 12.00               | 305 x 305 x 305   | 16    | --               | --               |           |              |
| 181812 SC                | 181812 SC NK | --         | 181812 SCGV NK | 18.00 x 18.00 x 12.00               | 457 x 457 x 305   | 16    | ⓀⓁⓍⓁⓍⓁⓍⓁⓍⓁⓍ      | ⓀⓁⓍⓁⓍⓁⓍⓁⓍⓁⓍ      |           |              |
| 241212 SC                | 241212 SC NK | --         | 241212 SCGV NK | 24.00 x 12.00 x 12.00               | 610 x 305 x 305   | 16    | ⓀⓁⓍⓁⓍⓁⓍⓁⓍⓁⓍ      | ⓀⓁⓍⓁⓍⓁⓍⓁⓍⓁⓍ      |           |              |
| 241812 SC                | 241812 SC NK | --         | 241812 SCGV NK | 24.00 x 18.00 x 12.00               | 610 x 457 x 305   | 16    | ⓀⓁⓍⓁⓍⓁⓍⓁⓍⓁⓍ      | ⓀⓁⓍⓁⓍⓁⓍⓁⓍⓁⓍ      |           |              |
| 242412 SC                | 242412 SC NK | --         | 242412 SCGV NK | 24.00 x 24.00 x 12.00               | 610 x 610 x 305   | 14    | ⓀⓁⓍⓁⓍⓁⓍⓁⓍⓁⓍ      | ⓀⓁⓍⓁⓍⓁⓍⓁⓍⓁⓍ      |           |              |
| 302412 SC                | 302412 SC NK | --         | 302412 SCGV NK | 30.00 x 24.00 x 12.00               | 762 x 610 x 305   | 14    | ⓀⓁⓍⓁⓍⓁⓍⓁⓍⓁⓍ      | ⓀⓁⓍⓁⓍⓁⓍⓁⓍⓁⓍ      |           |              |
| --                       | 303012 SC NK | --         | 303012 SCGV NK | 30.00 x 30.00 x 12.00               | 762 x 762 x 305   | 12    | --               | --               |           |              |
| 362412 SC                | 362412 SC NK | --         | 362412 SCGV NK | 36.00 x 24.00 x 12.00               | 914 x 610 x 305   | 14    | ⓀⓁⓍⓁⓍⓁⓍⓁⓍⓁⓍ      | ⓀⓁⓍⓁⓍⓁⓍⓁⓍⓁⓍ      |           |              |
| --                       | 363612 SC NK | --         | 363612 SCGV NK | 48.00 x 48.00 x 12.00               | 1219 x 1219 x 305 | 12    | --               | --               |           |              |
| --                       | 484812 SC NK | --         | 484812 SCGV NK | 48.00 x 48.00 x 12.00               | 1219 x 1219 x 305 | 12    | --               | --               |           |              |
| --                       | 303016 SC NK | --         | --             | 30.00 x 30.00 x 16.00               | 762 x 762 x 406   | 12    | --               | --               |           |              |
| --                       | 363616 SC NK | --         | 363616 SCGV NK | 48.00 x 48.00 x 16.00               | 1219 x 1219 x 406 | 12    | --               | --               |           |              |
| --                       | 484816 SC NK | --         | 484816 SCGV NK | 48.00 x 48.00 x 16.00               | 1219 x 1219 x 406 | 12    | --               | --               |           |              |

Type 1, 3, & 3R Enclosures

## Type 1 Flush & Surface Covers - Painted & Galvanized Catalog Number

Discount Schedule: A2  
Subclass: ANO

| Optional Flush Covers |            | Flush Cover Size |           | Fits Enclosure |           | Gauge | Replacement Surface Covers |            | Surface Cover Size |           | Fits Enclosure |           | Gauge |
|-----------------------|------------|------------------|-----------|----------------|-----------|-------|----------------------------|------------|--------------------|-----------|----------------|-----------|-------|
| Catalog Number        |            | in.              | mm        | A x B          |           |       | Painted                    | Galvanized | in.                | mm        | A x B          |           |       |
| Painted               | Galvanized |                  |           | in.            | mm        |       |                            |            |                    |           | in.            | mm        |       |
| 44 SCF                | --         | 5.50 x 5.50      | 140 x 140 | 4.00 x 4.00    | 102 x 102 | 16    | --                         | --         | --                 | --        | --             | --        | --    |
| 66 SCF                | --         | 7.50 x 7.50      | 191 x 191 | 6.00 x 6.00    | 152 x 152 | 16    | 66 SCS                     | --         | 6.09 x 6.09        | 155 x 155 | 6.00 x 6.00    | 152 x 152 | 16    |
| 86 SCF                | --         | 9.50 x 7.50      | 241 x 191 | 8.00 x 6.00    | 203 x 152 | 16    | --                         | --         | --                 | --        | --             | --        | --    |
| 88 SCF                | --         | 9.50 x 9.50      | 241 x 241 | 8.00 x 8.00    | 203 x 203 | 16    | 88 SCS                     | --         | 8.09 x 8.09        | 205 x 205 | 8.00 x 8.00    | 203 x 203 | 16    |
| 108 SCF               | --         | 11.50 x 9.50     | 292 x 241 | 10.00 x 8.00   | 254 x 203 | 16    | --                         | --         | --                 | --        | --             | --        | --    |
| 1010 SCF              | --         | 11.50 x 11.50    | 292 x 292 | 10.00 x 10.00  | 254 x 254 | 16    | 1010 SCS                   | --         | 10.09 x 10.09      | 256 x 256 | 10.00 x 10.00  | 254 x 254 | 16    |
| 128 SCF               | --         | 13.50 x 11.50    | 343 x 241 | 12.00 x 8.00   | 305 x 203 | 16    | --                         | --         | --                 | --        | --             | --        | --    |
| 1212 SCF              | --         | 13.50 x 13.50    | 343 x 343 | 12.00 x 12.00  | 305 x 305 | 16    | 1212 SCS                   | --         | 12.09 x 12.09      | 307 x 307 | 12.00 x 12.00  | 305 x 305 | 16    |
| 1616 SCF              | --         | 17.50 x 17.50    | 445 x 445 | 16.00 x 16.00  | 406 x 406 | 14    | --                         | --         | --                 | --        | --             | --        | --    |
| 1812 SCF              | --         | 19.50 x 13.50    | 495 x 343 | 18.00 x 12.00  | 457 x 305 | 14    | --                         | --         | --                 | --        | --             | --        | --    |
| 1818 SCF              | --         | 19.50 x 19.50    | 495 x 495 | 18.00 x 18.00  | 457 x 457 | 14    | 1818 SCS                   | --         | 18.09 x 18.09      | 459 x 459 | 18.00 x 18.00  | 457 x 457 | 16    |
| 2418 SCF              | --         | 25.50 x 19.50    | 648 x 495 | 24.00 x 18.00  | 610 x 457 | 12    | --                         | --         | --                 | --        | --             | --        | --    |
| 2424 SCF              | --         | 25.50 x 24.50    | 648 x 622 | 24.00 x 24.00  | 610 x 610 | 12    | 2424 SCS                   | --         | 24.09 x 24.09      | 612 x 612 | 24.00 x 24.00  | 610 x 610 | 14    |

Notes: Dimensions are in inches. Millimeters shown are for reference only. Data subject to change without notice.