

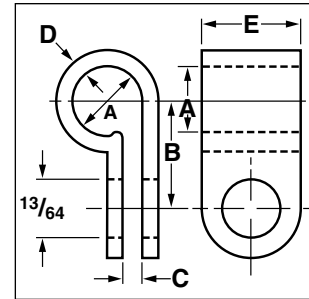
Plastic Cable Clamps

Polypropylene clamps hold harnesses, cables and tubing.

- Used for construction, maintenance and assembly-line operations.
- Use in control cabinets, panels and general applications.
- Tough, durable, yet extremely lightweight.
- Working temperature range: -54 °C (-66 °F) to 170 °C (340 °F).
- Clean, smooth edges for easy handling.
- Fast installation.



| Part # | Pkg Qty | Dimensions | | | | | Color |
|-------------|---------|------------|--------|-------|-------|---------|---------|
| | | A dia. | B | C | D | E width | |
| PPC-1525 | 18/card | 1/4" | 29/64" | 1/32" | 3/64" | 3/8" | Natural |
| PPC-1525UVB | 18/card | 1/4" | 29/64" | 1/32" | 3/64" | 3/8" | Black |
| PPC-1538 | 15/card | 3/8" | 31/64" | 1/32" | 3/64" | 3/8" | Natural |
| PPC-1538UVB | 15/card | 3/8" | 31/64" | 1/32" | 3/64" | 3/8" | Black |
| PPC-1550 | 12/card | 1/2" | 35/64" | 3/64" | 3/64" | 3/8" | Natural |
| PPC-1550UVB | 12/card | 1/2" | 35/64" | 3/64" | 3/64" | 3/8" | Black |
| PPC-1575 | 6/card | 3/4" | 3/64" | 3/32" | 3/64" | 1/2" | Natural |
| PPC-1575UVB | 6/card | 3/4" | 3/64" | 3/32" | 3/64" | 1/2" | Black |
| PPC-1600 | 4/card | 1" | 51/64" | 3/32" | 3/64" | 1/2" | Natural |



NEW EZ-Cable Clips

EZ-Cable Clips are designed to secure low voltage cables and tubing.

- Flexible to accommodate different cable sizes.
- Made from aluminum, will not rust, crack or deteriorate.

| Part # | Qty | Size | Clamp Dia. | Color |
|------------|---------|------|------------|-------|
| PAW-1525L1 | 15/clam | S | 1/4" | White |
| PAW-1525T | 15/clam | S | 1/4" | White |
| PAW-1550L1 | 15/clam | L | 1/2" | White |



Rubber Insulated Clamps

Secures wire and cable in industrial, auto/marine and where vibrations may occur.

- Corrosive-resistant plated steel clamp.
- Flexible 1/2" wide body.
- Secure with 1/4" screw.
- XTM are stainless steel.

| Part # | Size | Pkg Qty |
|----------|------|---------|
| PPR-1550 | 1/2" | 2 pcs |
| PPR-1575 | 3/4" | 2 pcs |
| PPR-1600 | 1" | 1 pc |

GB Xtreme®

| Part # | Qty | Size | Country |
|---------|-----|------|---------|
| XTM-401 | 2 | 3/8" | US |
| XTM-405 | 2 | 1/2" | US |

These corrosive-resistant stainless steel clamps secure wire and cable wherever vibrations may occur. The controlled "squeeze" fastener allows fastening to desired tightness.



Plastic Kwik Clips

Mount bundles, cables, cords, tools etc. to drywall, wood and painted surfaces.

- Ratcheting/releasable feature allows adjustment to a range of bundle diameters.
- Adhesive backed.

| Part # | Pkg Qty | Description | Color |
|-------------|---------|------------------|---------|
| GKK-1538 | 6/card | Holds 3/8" Cable | Natural |
| GKK-1538UVB | 6/card | Holds 3/8" Cable | Black |
| GKK-1550 | 4/card | Holds 1/2" Cable | Natural |
| GKK-1575 | 2/card | Holds 3/4" Cable | Natural |

