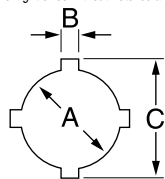


# SPECIAL APPLICATION PUNCHES

## Oiltight Punches with Notches

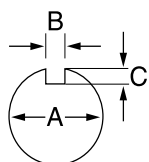
Other oiltight sizes without notches available in standard, Slug-Buster® and Slug-Splitter® designs.



HOLE SIZE						MAXIMUM CAPACITY MILD STEEL		OPERATION TYPE	CAT./UPC NO					MINIMUM PILOT HOLE		WEIGHT LBS. KG.	OPTIONAL ADAPTER FOR HYDRAULIC DRIVERS		
INCH			MM			GA	MM		PUNCH UNIT (INCLUDES PUNCH, DIE, DRAW STUD AND NUTS)		BB DRIVE NUT	COUNTER NUT	INCH	MM					
A	B	C	A	B	C				PUNCH	DIE	DRAW STUD	DRIVE NUT	COUNTER NUT						
.875	.125	1.000	22.5	3.2	25.4	14	2.0	Hand/Hydr.	60238	60239	60250	60117	60165	60258	.625	15.9	2.1	.95	601670
1.210	.190	1.380	30.5	4.8	36.0	10	3.5	Hand/Hydr.	60242	60243	60249	60117	60165	60258	.625	15.9	2.7	1.2	601670

For maximum draw stud life, Greenlee recommends the use of battery or hydraulic drivers.

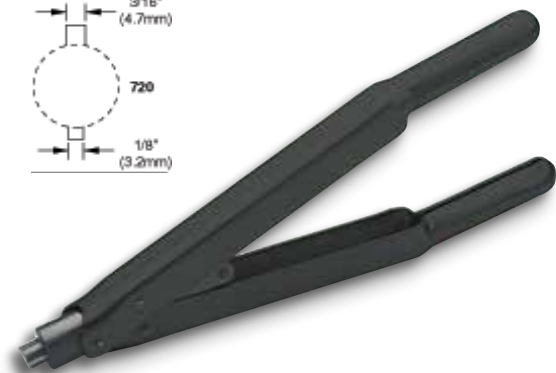
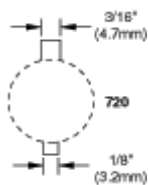
## Key Punches



HOLE SIZE						MAXIMUM CAPACITY MILD STEEL		OPERATION TYPE	CAT./UPC NO					MINIMUM PILOT HOLE		WEIGHT LBS. KG.	OPTIONAL ADAPTER FOR HYDRAULIC DRIVERS		
INCH			MM			GA	MM		PUNCH UNIT (INCLUDES PUNCH, DIE, DRAW STUD AND NUTS)		BB DRIVE NUT	COUNTER NUT	INCH	MM					
A	B	C	A	B	C				PUNCH	DIE	DRAW STUD	DRIVE NUT	COUNTER NUT						
0.481	0.055	.030	12.2	1.4	.8	16	1.5	Hand/Hydr.	60101	60102	60103	60115	60120	05244	.375	9.5	.88	.4	601140
1.171	0.123	.097	29.7	3.1	2.5	14	2.0	Hand/Hydr.	60104	60105	60106	60166	60165	60258	.875	23.8	2.3	1.0	601670
1.265	0.156	.097	32.1	4.0	2.5	14	2.0	Hand/Hydr.	60107	60108	60109	60166	60165	60258	.875	23.8	2.4	1.1	601670
1.328	0.102	.097	33.7	2.6	2.5	14	2.0	Hand/Hydr.	60110	60111	60112	60166	60165	60258	.875	23.8	2.4	1.1	601670

For use with any Greenlee Hydraulic Driver or Battery-Powered Driver. For maximum draw stud life, Greenlee recommends the use of battery or hydraulic drivers

## 720 Keyway Punch



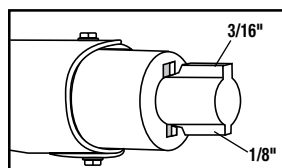
NOTE: Not for Stainless Steel

- Eliminates time-consuming hand sawing and filing when making keyways for push-button switches.
- Use as a nibbler to make wider or deeper keyways.
- Punches 1/8" (3.2 mm) or 3/16" (4.8 mm) keyways for 7/8" (22.5 mm) or 1-7/32" (30.5 mm) push-button holes.
- Canadian Patent No. 1,172,435.

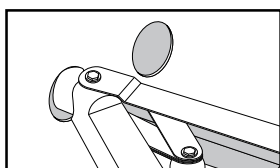
### SPECIFICATIONS

Operation Manual  
Capacity 10 gauge (3.5 mm) mild steel

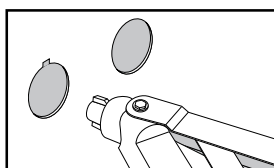
CAT NO.	UPC NO.	DESCRIPTION	WEIGHT	
			LBS.	KG.
720	26534	Keyway Punch	2.8	1.27
26534	26536	Punch		
26538	26538	Die		



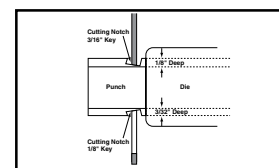
1. Locate proper cutting notch on the cutting head.



2. Place cutting notch inside edge of hole and cut keyway.



3. Withdraw the punch.



4. Use as a nibbler to make wider or deeper keyways.