



# LIGHTING

## UTILITY LIGHT – INTRODUCTION



### V SERIES LED

#### FEATURES-SPECIFICATIONS

##### Introduction

Killark 'VSL' Series LED fixtures are designed for installations where moisture, dirt, dust, corrosion and vibration may be present, or NEMA 3 and 4 areas where wind, water, snow or high ambients can be expected. VSL's are sized to replace "Utility" type fixtures (incandescent or CFL's) in hallways, closets, elevator pits, docks, stairwells, access tunnels, and mechanical rooms. These fixtures can be used in locations made hazardous by the presence of flammable vapors or gases or combustible dusts as defined by the NEC. Typical applications include manufacturing plants, and certain chemical and petrochemical processing facilities, sewage treatment plants, off-shore and dockside installations, and garage areas.

#### LED Luminaire Features and Standards

- Compact in Size with Traditional Industrial Appearance and Suitability
- Wide variety of optics including glass globes (clear and tempered, color) plus polycarbonate globes in clear and colors
- Optional Mounting arrangements including Pendant, Wall, Ceiling, Stanchion and Adapters
- Fixtures available unit packed, order option CP
- VSL LED Housings can be retrofitted to existing V Series splice boxes; upgrade from CFL or incandescent
- Energy Savings – less than 13 Watts of Power; less than 16 Watts for VSL1630. Replaces 75W or higher incandescent
- Long Life – 60,500+ maintenance-free hours to 70% initial lumens
- Crisp White Light for Excellent Color Rendering – Chromaticity 5000°K (CCT); 70 CRI

- Integral driver – maintains fixture's compact profile to fit in existing spaces
- Ambient suitability -40°C to 55°Ck
- Instant on – including after power interruption
- "World Voltage" 120-277VAC 50/60Hz
- Solder-LESS LED Board Connections – Vibration Resistant
- LM80-08\* Measurement of lumen maintenance for LED light sources
- LM79-08\* Certified "Absolute" Photometry, including Chromaticity Color for Solid State Lighting
- TM-21\* method to project long term lumen maintenance
- L70 Values – Industry Nomenclature for Hours of use to 70% of Initial Lumens

#### Compliances

- UL-8750 for LED lighting
- UL 1598 standard for luminaires
- UL-844 Standard for lighting fixtures for hazardous locations, Class I, Division 2; Class II, Division 2; Class III, Division 2
- CSA C22.2 no. 137-M1981 electric luminaires for use in hazardous locations
- Enclosed and gasketed
- NEMA 3, 4

#### Materials, Weights

- Body, splice box and guards are corrosion resistant copper-free aluminum alloy
- Baked powder epoxy/polyester finish, electrostatically applied for complete, uniform corrosion protection
- Reflectors – Polypropylene for pendant or ceiling applications
- Heavy-duty silicone gasketing for NEMA 4 requirements

Class I, Div. 2, Groups A,B,C,D  
 Class I, Zone 2, Groups IIC,IIB,IIA  
 Class II, Div. 2, Groups F,G<sup>ⓐ</sup>  
 Class III  
 Suitable for wet locations  
 Enclosure Type 4<sup>ⓐ</sup>



Certified - File LR11713

#### Optic Selection Examples

- Broadest **COLOR** globe offering for Hazardous Locations in the industry
- Use as status lights or specialty/emergency indicators



\* LM-xx & TM-21 are Illumination Engineering Society Standards designed to promote uniformity in testing procedures among test labs and manufacturers. For more information go to [www.ies.org](http://www.ies.org)

<sup>ⓐ</sup> When mounted (globe down) to V series boxes; not Class II, Div. 2 or NEMA 4 on VBA, VFPS, VB or VFL adaptors to sheet metal boxes.

<sup>ⓑ</sup> Glass globe models to 55°C; Polycarbonate suitable to 40°C.



UTILITY LIGHT – CATALOG LOGIC



Class I, Div. 2, Groups A,B,C,D  
 Class I, Zone 2, Groups IIC,IIB,IIA  
 Class II, Div. 2, Groups F,G<sup>①</sup>  
 Class III  
 Suitable for wet locations  
 Enclosure Type 4<sup>①</sup>

Certified - File LR11713



Clear Glass w/Guard

White Glass w/Guard

Blue Glass

Clear Polycarbonate

Red Polycarbonate

**V SERIES LED Catalog Number Logic**

- VSL Series Constant**  
 1  
**Lamp Wattage**  
 2  
 13 = 13W LED  
 16 = 16W LED  
**Voltage**  
 3  
 30 – 120-277VAC (13W, 16W)  
 27 – 12-24VDC (13W, 16W)  
 34 – 120-250VDC (13W)  
**Mounting Type**  
 4  
 NN – Mounr Ordered Separately  
 A1 – 1/2" Pendant (VGA-1)  
 A2 – 3/4" Pendant (VGA-2)  
 F1 – 1/2" Ceiling w/Feet & Adapter (VBC-1 w/VBA)  
 F2 – 3/4" Ceiling w/Feet & Adapter (VBC-2 w/VBA)  
 X1 – 1/2" Ceiling (VGX-1)  
 X2 – 3/4" Ceiling (VGX-2)  
 C1 – 1/2" Ceiling (VGC-1)  
 C2 – 3/4" Ceiling (VGC-2)  
 H1 – 1/2" Ceiling Dead End (VGH-1)  
 H2 – 3/4" Ceiling Dead End (VGH-2)  
 D1 – 1/2" Ceiling Deep (VXA-1)  
 D2 – 3/4" Ceiling Deep (VXA-2)  
 D4 – 1-1/4" Stanchion (VD-4)  
 RA – Round (Box) Adapter (VBA)  
 SA – Square (Box) Adapter (VFPS)  
 W1 – 1/2" Wall w/Feet (VBC-1 w/VB-1)  
 W2 – 3/4" Wall w/Feet (VBC-2 w/VB-2)  
 V1 – 1/2" Wall Elbow (VB-1)  
 V2 – 3/4" Wall Elbow (VB-2)  
 FL – Elbow for "V" Box (VFL)

- S** 5  
**G - B** 6  
**B** 7  
**S** 8  
**Reflector**  
 S – Standard Reflector (Pendant or Ceiling Use Only)<sup>②</sup>  
 CP – Component Pack<sup>③</sup>  
**Optic Color (Optic Type)**  
 A – Amber (S, H, P)  
 B – Blue (S, H)  
 R – Red (S, H, P)  
 G – Green (S, P)  
 P – Purple (S)  
 BG – Blue Green (S, H)  
 W – White (S)  
**Guard**  
 G – Guard (For Glass Globes Only)  
 N – No Guard (Standard on Polycarbonate Globes)  
 R – Guard Red (For Glass Globes Only)  
 Can Signify Emergency UPS Circuits  
**Optics\*\***  
 S – Standard Globe (Clear)  
 H – Heat Resistant (Tempered) Globe (Clear)  
 P – Polycarbonate (Clear)



COLORED GLOBE OPTIONS** EXAMPLE VSL1330A1SG-A			
SUFFIX AND AVAILABLE COMBINATIONS			
COLOR NUMBER	STANDARD GLOBE	TEMPERED GLOBE	POLYCARBONATE
AMBER	A	A	A
BLUE	B	B	—
RUBY	R	R	R
GREEN	G	—	G
PURPLE	P	—	—
BLUE-GREEN	BG	BG	—
WHITE	W	W	W



\*\* Use tempered glass or poly globe for wet location applications.

① When mounted (globe down) to V series boxes; not Class II, Div.2 or NEMA 4 on VBA, VFPS, VB or VFL adaptors to sheet metal boxes.

② Reflector is held on fixture body by VAG-100 guard for glass globe models or polycarbonate globe's shoulder. Reflectors ship separately.

③ CP option includes complete fixture in components contained in single outer carton.

# LIGHTING

VSL SERIES



## UTILITY LIGHT – ORDERING INFORMATION



**LED**  
**TECHNOLOGY**

Class I, Div. 2, Groups A,B,C,D  
Class I, Zone 2, Groups IIC,IIB,IIA  
Class II, Div. 2, Groups F,G<sup>①</sup>  
Class III  
Suitable for wet locations  
Enclosure Type 4<sup>①</sup>

Certified - File LR11713

### ORDERING INFORMATION



PENDANT MOUNT WITH VGA SPLICE BOX 1 – HUB						
LED	WATTS	VOLTAGE	HUB SIZE	FIXTURE W/ STANDARD CLEAR GLASS GLOBE & GUARD**	FIXTURE W/ TEMPERED CLEAR GLASS GLOBE & GUARD**	FIXTURE W/ CLEAR POLYCARBONATE GLOBE**
VSL1330	13	120-277VAC	1/2"	VSL1330A1SG	VSL1330A1HG	VSL1330A1PN
			3/4"	VSL1330A2SG	VSL1330A2HG	VSL1330A2PN
VSL1630	16	120-277VAC	1/2"	VSL1630A1SG	VSL1630A1HG	VSL1630A1PN
			3/4"	VSL1630A2SG	VSL1630A2HG	VSL1630A2PN



CEILING MOUNT WITH FEET USING VBC SPLICE BOX AND VBA ADAPTER 4 – HUBS						
LED	WATTS	VOLTAGE	HUB SIZE	FIXTURE W/ STANDARD CLEAR GLASS GLOBE & GUARD**	FIXTURE W/ TEMPERED CLEAR GLASS GLOBE & GUARD**	FIXTURE W/ CLEAR POLYCARBONATE GLOBE**
VSL1330	13	120-277VAC	1/2"	VSL1330F1SG	VSL1330F1HG	VSL1330F1PN
			3/4"	VSL1330F2SG	VSL1330F2HG	VSL1330F2PN
VSL1630	16	120-277VAC	1/2"	VSL1630F1SG	VSL1630F1HG	VSL1630F1PN
			3/4"	VSL1630F2SG	VSL1630F2HG	VSL1630F2PN



CEILING MOUNT WITH VGX SPLICE BOX 4 – HUBS						
LED	WATTS	VOLTAGE	HUB SIZE	FIXTURE W/ STANDARD CLEAR GLASS GLOBE & GUARD**	FIXTURE W/ TEMPERED CLEAR GLASS GLOBE & GUARD**	FIXTURE W/ CLEAR POLYCARBONATE GLOBE**
VSL1330	13	120-277VAC	1/2"	VSL1330X1SG	VSL1330X1HG	VSL1330X1PN
			3/4"	VSL1330X2SG	VSL1330X2HG	VSL1330X2PN
VSL1630	16	120-277VAC	1/2"	VSL1630X1SG	VSL1630X1HG	VSL1630X1PN
			3/4"	VSL1630X2SG	VSL1630X2HG	VSL1630X2PN



CEILING MOUNT WITH VGC SPLICE BOX – FEED THROUGH 2 – HUBS						
LED	WATTS	VOLTAGE	HUB SIZE	FIXTURE W/ STANDARD CLEAR GLASS GLOBE & GUARD**	FIXTURE W/ TEMPERED CLEAR GLASS GLOBE & GUARD**	FIXTURE W/ CLEAR POLYCARBONATE GLOBE**
VSL1330	13	120-277VAC	1/2"	VSL1330C1SG	VSL1330C1HG	VSL1330C1PN
			3/4"	VSL1330C2SG	VSL1330C2HG	VSL1330C2PN
VSL1630	16	120-277VAC	1/2"	VSL1630C1SG	VSL1630C1HG	VSL1630C1PN
			3/4"	VSL1630C2SG	VSL1630C2HG	VSL1630C2PN

<sup>①</sup> When mounted (globe down) to V series boxes; not Class II, Div.2 or NEMA 4 on VBA, VFPS, VB or VFL adaptors to sheet metal boxes.  
\*\* Use tempered glass or poly globes for wet location applications. See logic page for available globe colors.



## UTILITY LIGHT – ORDERING INFORMATION



Class I, Div. 2, Groups A,B,C,D  
 Class I, Zone 2, Groups IIC,IIB,IIA  
 Class II, Div. 2, Groups F,G<sup>①</sup>  
 Class III  
 Suitable for wet locations  
 Enclosure Type 4<sup>①</sup>

Certified - File LR11713

### ORDERING INFORMATION



Glass Globe



Poly Globe



Glass Globe



Poly Globe



Glass Globe



Poly Globe



Glass Globe



Poly Globe

CEILING MOUNT WITH VGH SPLICE BOX – DEAD END 1 – HUB						
LED	WATTS	VOLTAGE	HUB SIZE	FIXTURE W/ STANDARD CLEAR GLASS GLOBE & GUARD**	FIXTURE W/ TEMPERED CLEAR GLASS GLOBE & GUARD**	FIXTURE W/ CLEAR POLYCARBONATE GLOBE**
VSL1330	13	120-277VAC	1/2"	VSL1330H1SG	VSL1330H1HG	VSL1330H1PN
			3/4"	VSL1330H2SG	VSL1330H2HG	VSL1330H2PN
VSL1630	16	120-277VAC	1/2"	VSL1630H1SG	VSL1630H1HG	VSL1630H1PN
			3/4"	VSL1630H2SG	VSL1630H2HG	VSL1630H2PN

CEILING MOUNT WITH VXA DEEP SPLICE BOX 5 – HUBS						
LED	WATTS	VOLTAGE	HUB SIZE	FIXTURE W/ STANDARD CLEAR GLASS GLOBE & GUARD**	FIXTURE W/ TEMPERED CLEAR GLASS GLOBE & GUARD**	FIXTURE W/ CLEAR POLYCARBONATE GLOBE**
VSL1330	13	120-277VAC	1/2"	VSL1330D1SG	VSL1330D1HG	VSL1330D1PN
			3/4"	VSL1330D2SG	VSL1330D2HG	VSL1330D2PN
VSL1630	16	120-277VAC	1/2"	VSL1630D1SG	VSL1630D1HG	VSL1630D1PN
			3/4"	VSL1630D2SG	VSL1630D2HG	VSL1630D2PN

CEILING MOUNT WITH VBA ADAPTER FOR ROUND OUTLET BOX 0 – HUBS <sup>①</sup>						
LED	WATTS	VOLTAGE	HUB SIZE	FIXTURE W/ STANDARD CLEAR GLASS GLOBE & GUARD**	FIXTURE W/ TEMPERED CLEAR GLASS GLOBE & GUARD**	FIXTURE W/ CLEAR POLYCARBONATE GLOBE**
VSL1330	13	120-277VAC	–	VSL1330RASG	VSL1330RAHG	VSL1330RAPN
VSL1630	16	120-277VAC	–	VSL1630RASG	VSL1630RAHG	VSL1630RAPN

CEILING MOUNT WITH VFPS ADAPTER FOR SQUARE OR OCTAGON OUTLET BOX 0 – HUBS <sup>①</sup>						
LED	WATTS	VOLTAGE	HUB SIZE	FIXTURE W/ STANDARD CLEAR GLASS GLOBE & GUARD**	FIXTURE W/ TEMPERED CLEAR GLASS GLOBE & GUARD**	FIXTURE W/ CLEAR POLYCARBONATE GLOBE**
VSL1330	13	120-277VAC	–	VSL1330SASG	VSL1330SAHG	VSL1330SAPN
VSL1630	16	120-277VAC	–	VSL1630SASG	VSL1630SAHG	VSL1630SAPN

<sup>①</sup> When mounted (globe down) to V series boxes; not Class II, Div.2 or NEMA 4 on VBA, VFPS, VB or VFL adaptors to sheet metal boxes.

\*\* Use tempered glass or poly globes for wet location applications. See logic page for available globe colors.



## UTILITY LIGHT – ORDERING INFORMATION



Class I, Div. 2, Groups A,B,C,D  
 Class I, Zone 2, Groups IIC,IIB,IIA  
 Class II, Div. 2, Groups F,G<sup>Ⓛ</sup>  
 Class III  
 Suitable for wet locations  
 Enclosure Type 4<sup>Ⓛ</sup>

Certified - File LR11713

### ORDERING INFORMATION

#### WALL MOUNT WITH FEET USING VBC SPLICE BOX AND VB ELBOW 4 – HUBS

LED	WATTS	VOLTAGE	HUB SIZE	FIXTURE W/ STANDARD CLEAR GLASS GLOBE & GUARD**	FIXTURE W/ TEMPERED CLEAR GLASS GLOBE & GUARD**	FIXTURE W/ CLEAR POLYCARBONATE GLOBE**
VSL1330	13	120-277VAC	1/2"	VSL1330W1SG	VSL1330W1HG	VSL1330W1PN
			3/4"	VSL1330W2SG	VSL1330W2HG	VSL1330W2PN
VSL1630	16	120-277VAC	1/2"	VSL1630W1SG	VSL1630W1HG	VSL1630W1PN
			3/4"	VSL1630W2SG	VSL1630W2HG	VSL1630W2PN



Glass Globe



Poly Globe



Glass Globe



Poly Globe

#### WALL MOUNT WITH VB ELBOW TO MOUNT TO 4" OUTLET BOX 0 – HUBS<sup>Ⓛ</sup>

LED	WATTS	VOLTAGE	NECK HUB SIZE	FIXTURE W/ STANDARD CLEAR GLASS GLOBE & GUARD**	FIXTURE W/ TEMPERED CLEAR GLASS GLOBE & GUARD**	FIXTURE W/ CLEAR POLYCARBONATE GLOBE**
VSL1330	13	120-277VAC	1/2"	VSL1330V1SG	VSL1330V1HG	VSL1330V1PN
			3/4"	VSL1330V2SG	VSL1330V2HG	VSL1330V2PN
VSL1630	16	120-277VAC	1/2"	VSL1630V1SG	VSL1630V1HG	VSL1630V1PN
			3/4"	VSL1630V2SG	VSL1630V2HG	VSL1630V2PN



Glass Globe



Poly Globe

#### WALL MOUNT – WITH VFL ELBOW FOR DIRECT MOUNT TO V SERIES SPLICE BOXES 0 – HUBS<sup>Ⓛ</sup>

LED	WATTS	VOLTAGE	HUB SIZE	FIXTURE W/ STANDARD CLEAR GLASS GLOBE & GUARD**	FIXTURE W/ TEMPERED CLEAR GLASS GLOBE & GUARD**	FIXTURE W/ CLEAR POLYCARBONATE GLOBE**
VSL1330	13	120-277VAC	–	VSL1330FLSG	VSL1330FLHG	VSL1330FLPN
VSL1630	16	120-277VAC	–	VSL1630FLSG	VSL1630FLHG	VSL1630FLPN



Glass Globe



Poly Globe

#### STANCHION MOUNT FOR 1-1/4" THREADED PIPE 1 – HUB

LED	WATTS	VOLTAGE	HUB SIZE	FIXTURE W/ STANDARD CLEAR GLASS GLOBE & GUARD**	FIXTURE W/ TEMPERED CLEAR GLASS GLOBE & GUARD**	FIXTURE W/ CLEAR POLYCARBONATE GLOBE**
VSL1330	13	120-277VAC	1-1/4"	VSL1330D4SG	VSL1330D4HG	VSL1330D4PN
VSL1630	16	120-277VAC	1-1/4"	VSL1630D4SG	VSL1630D4HG	VSL1630D4PN

<sup>Ⓛ</sup> When mounted (globe down) to V series boxes; not Class II, Div.2 or NEMA 4 on VBA, VFPS, VB or VFL adaptors to sheet metal boxes.

\*\* Use tempered glass or poly globes for wet location applications. See logic page for available globe colors.



## UTILITY LIGHT – COMPONENTS



VSL Body



### VSL Fixture Bodies Only

Fixture bodies contain the LED driver and array, heat sink plus gaskets, and are threaded to accept globes, guards and reflectors. Users with KILLARK “V” Series vapor tight fixtures from the 1960’s onward can up-grade to the latest technology and, in many cases, reuse existing mounts, globes and guards. VSL bodies are designed for metallic boxes and mount directly to V Series splice boxes or adapters as indicated.

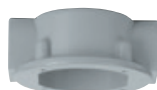
VSL FIXTURE BODIES	
CATALOG NUMBER	DESCRIPTION
VSL1330	13W 120-277VAC 50/60Hz Body with LEDs and Driver
VSL1630	16W 120-277VAC 50/60Hz Body with LEDs and Driver



VGA



VGH



VGC



VGX



VXA



VBC

### VSL Splice Boxes

For use with VSL Series fixture bodies.

VSL SPLICE BOXES				
CATALOG NUMBER	HUB SIZE	QTY.	LOGIC CODE	DESCRIPTION
VGA-1	1/2"	1	A1	Pendant mount
VGA-2	3/4"	1	A2	
VGH-1	1/2"	1	H1	Ceiling mount
VGH-2	3/4"	1	H2	
VGC-1	1/2"	2	C1	Ceiling mount
VGC-2	3/4"	2	C2	
VGX-1	1/2"	4	X1	Ceiling mount
VGX-2	3/4"	4	X2	
VXA-1	1/2"	5	D1	Ceiling mount, deep box
VXA-2	3/4"	5	D2	
VBC-1*	1/2"	4	F1	Ceiling mount, with 3 close-up plugs (requires VBA Adapter) or wall mount with VB elbow
VBC-2*	3/4"	4	F2	
VXAB	–	–	–	Blank close-up plate (less gasket)

\*Volume cu. in. is 18



VBA



VFPS

### VSL Adapters

VSL ADAPTER MOUNTING PLATES	
CATALOG NUMBER	DESCRIPTION
VBA	Adapts fixture body to VB, VJ or steel 3-1/2" & 4" splice boxes. Supplied with gasket.
VFPS	Adapts fixture body to steel 4" square outlet boxes or 3-1/2" or 4" octagon boxes

### VSL Wall/Stanchion Mounts

VSL MOUNTING BRACKETS			
CATALOG NUMBER	HUB SIZE	QTY.	DESCRIPTION
VB-1	1/2"	1	Wall mount to VJ or VB boxes
VB-2	3/4"	1	Wall mount to VJ or VB boxes
VFL	–	–	Wall mount to V boxes directly or to VJ, VB boxes with VBA adapter
VD-4	1-1/4"	1	Stanchion mount



VB



VFL



VD



## UTILITY LIGHT – COMPONENTS, RATINGS & WEIGHTS

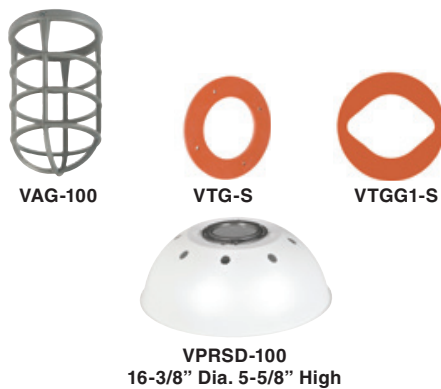


### VSL Globes

VSL GLOBES – ORDERING INFORMATION AND SUFFIX GRID**						
COLOR	GLASS	OPTIC LOGIC	TEMPERED GLASS	OPTIC LOGIC	POLYCARBONATE	OPTIC LOGIC
Clear	VCG-100	S*	VCGP-100	H*	VPLCG-100	P*
Amber	AMG-100	A	VAMGP-100	A	VPLCG-100A	A
Blue	VBG-100	B	VBG-100	B	–	–
Ruby (Red)	VRG-100	R	VRGP-100	R	VPLCG-100R	R
Green	VRSG-100	G	–	–	VPLCG-100G	G
Purple	VPG-100	P	–	–	–	–
Blue-Green	VGG-100	BG	VGGP-100	BG	–	–
White	VWG-100	W	VWGP-100	W	VPLCG-100W	W

\* See Pre-configured ordering tables for complete fixtures.

\*\* Use tempered glass or polycarbonate globes for wet location applications.



### VSL Components

VSL COMPONENT PARTS AND ACCESSORIES	
CATALOG NUMBER	DESCRIPTION
VAG-100	Aluminum Guard for use with Glass Globe
VAG-100R	Red Aluminum Guard for use with Glass Globe
VTG-S	Body to Splice Box Gasket – Silicone
VTGG1-S	Globe Gasket – Silicone
VPRSD-100	White polypropylene for pendant & ceiling applications. Not for use with wall or stanchion models.

Typical Weights (lbs.) w/Standard Globe and Guard – VSL Series			
Pendant 7.03	Ceiling 7.51	Wall 8.09	Stanchion 7.61

### VSL Thermal Ratings

VSL THERMAL PERFORMANCE DATA INCLUDING VPRSD-100 REFLECTOR								
CATALOG NUMBER	AMBIENT	C1D2		C2D2		SUPPLY	L70 <sup>③</sup>	
		GLASS GLOBE	POLY GLOBE	GLASS GLOBE	POLY GLOBE	WIRE	TM-21	CALCULATED
VSL1330	40°C	T6	T5	T5 (F,G)	T5 (F,G)	90°	60,500	100,000+
VSL1330	55°C	T5	–	–	–	90°	60,500	100,000+
VSL1630	40°C	T5	–	T5 (F,G)	–	90°	60,500	100,000+

### VSL Electrical Ratings

VSL LED BODY WITH DRIVERS AND LEDS – ELECTRICAL RATINGS					
CATALOG NUMBER	VOLTAGE 50/60HZ	WATTAGE	AMPS 120/277	CIL <sup>②</sup>	WEIGHT LBS.
VSL1330	120-277VAC	12.42	.108/.047	1300	5.0
VSL1630	120-277VAC	15.64	.156/.067	1625	5.0

VSL TOTAL LUMEN OUTPUT			
WATTAGE	W/ GLOBE VCG-100	W/GLOBE VPLCG-100	W/GLOBE VWG100
13W	1211	1104	905
16W	1328	1308	1072

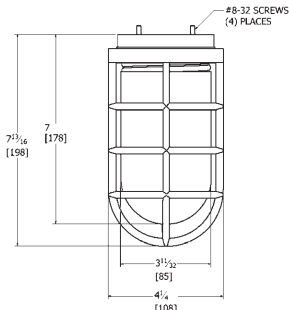
① Driver THD<20%, Powerfactor >90% @ 120V; Line regulation 2%; Load regulation 5%; Protected against Over-voltage and Overcurrent.

② CIL = Calculated Initial Lumens of LED component based on mfg. data and driver current INSIDE the optic. This value is provided as a reference only for comparison to traditional light sources such as Incandescent, HID, or fluorescent which use initial values in "relative" photometry. KILLARK LED luminaires are tested using the Absolute photometry method (LM79-08), which calculates delivered lumens only. KILLARK's LED luminaires provide very bright white 5000o K (CCT) color and can appear brighter than traditional light sources with higher lumen values under both photopic and scotopic conditions.

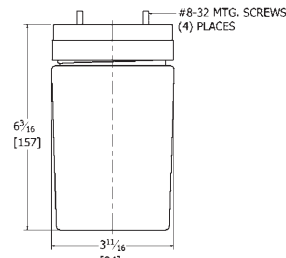
③ "TM-21 based values require very long duration testing. The L70/TM-21 "official reported" value is based on 10,000 hours testing at 1000mA drive current ("reported L70" is a factor of test duration). KILLARK's VSL utilizes lower 450mA maximum drive current - "calculated" values by the chip vendor predict L70 life substantially in excess of 100,000 hours even at 1000mA."



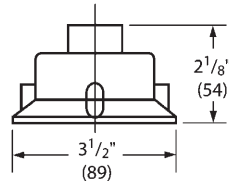
**UTILITY LIGHT – DIMENSIONS**



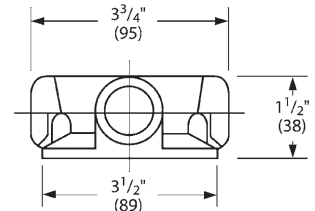
**VSL Body w/Globe & Guard, No Splice Box**



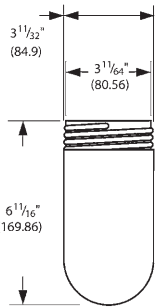
**VSL Body w/Polycarbonate Globe, No Splice Box**



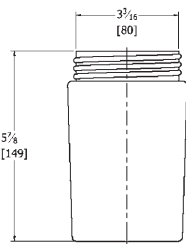
**VGA**



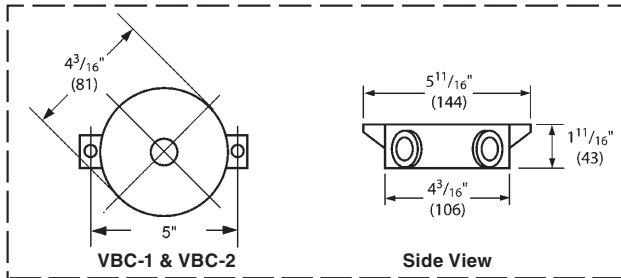
**VGC or VGX  
\*VGH is 3-5/8" (92)**



**Glass Globe**

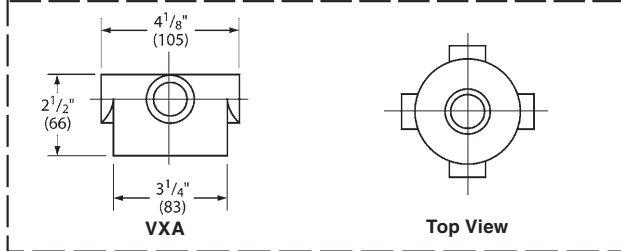


**Polycarbonate Globe**



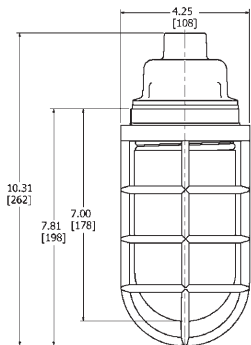
**VBC-1 & VBC-2**

**Side View**

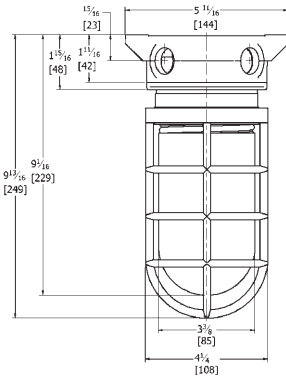


**VXA**

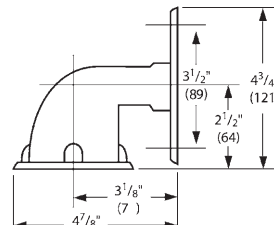
**Top View**



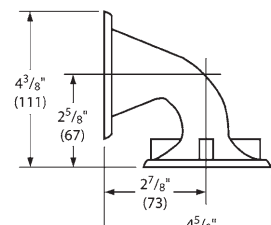
**VSL Pendant Fixture w/Globe & Guard**



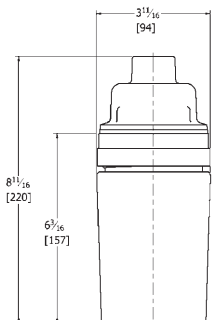
**VSL Ceiling Fixture w/Globe & Guard**



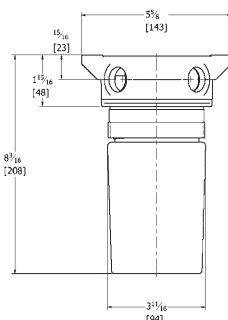
**VB**



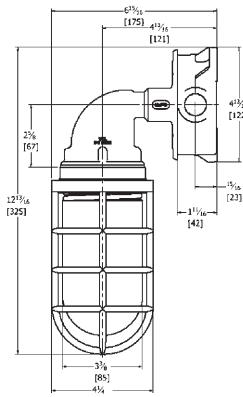
**VFL**



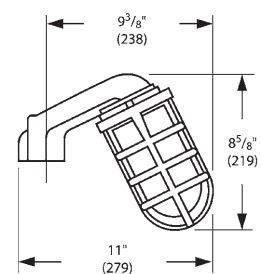
**VSL Pendant Fixture w/Polycarbonate Globe**



**VSL Ceiling Fixture w/Polycarbonate Globe**



**VSL Wall Mounted Fixture w/Globe & Guard**



**VSL Stanchion Fixture w/Globe & Guard**