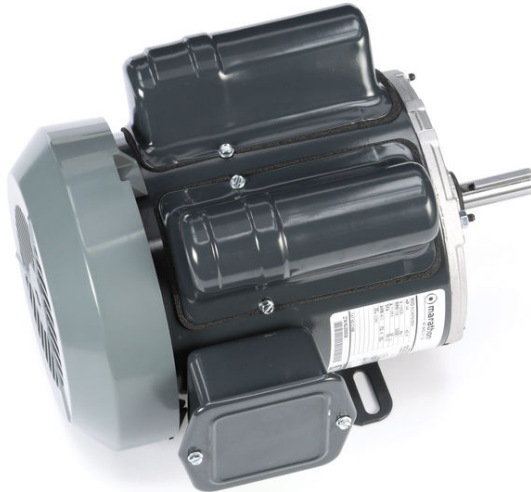


PRODUCT INFORMATION PACKET

marathon®
Motors

Model No: 5KC46PN0359Y
Catalog No: C1489
3/4,1725,TEFC,56,1/60/115/230
Instant Reversing



Regal and Marathon are trademarks of Regal Beloit Corporation or one of its affiliated companies.
©2018 Regal Beloit Corporation, All Rights Reserved. MC017097E

REGAL

Nameplate Specifications

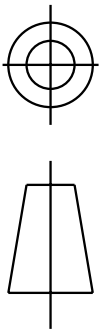
Output HP	3/4 Hp	Output KW	0.56 kW
Frequency	60 Hz	Voltage	115/230 V
Current	11.0,5.5 A	Speed	1725 rpm
Service Factor	1	Phase	1
Efficiency	70 %	Duty	Continuous
Insulation Class	B	KVA Code	L
Frame	56	Enclosure	Totally Enclosed Fan Cooled
Overload Protector	MAN	Ambient Temperature	40 °C
Drive End Bearing Size	6203	Opp Drive End Bearing Size	6203
UL	Recognized	CSA	Yes
CE	N		

Technical Specifications

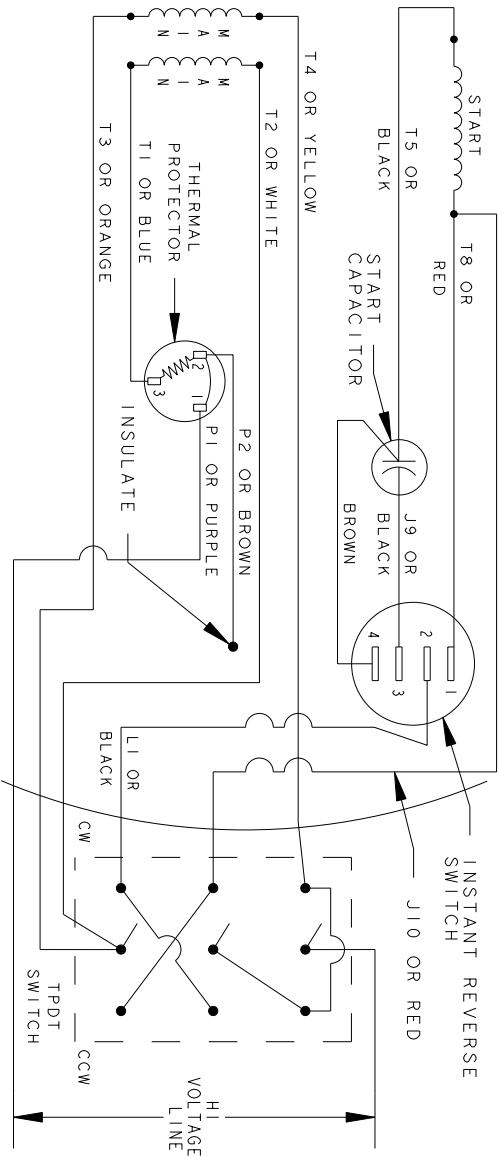
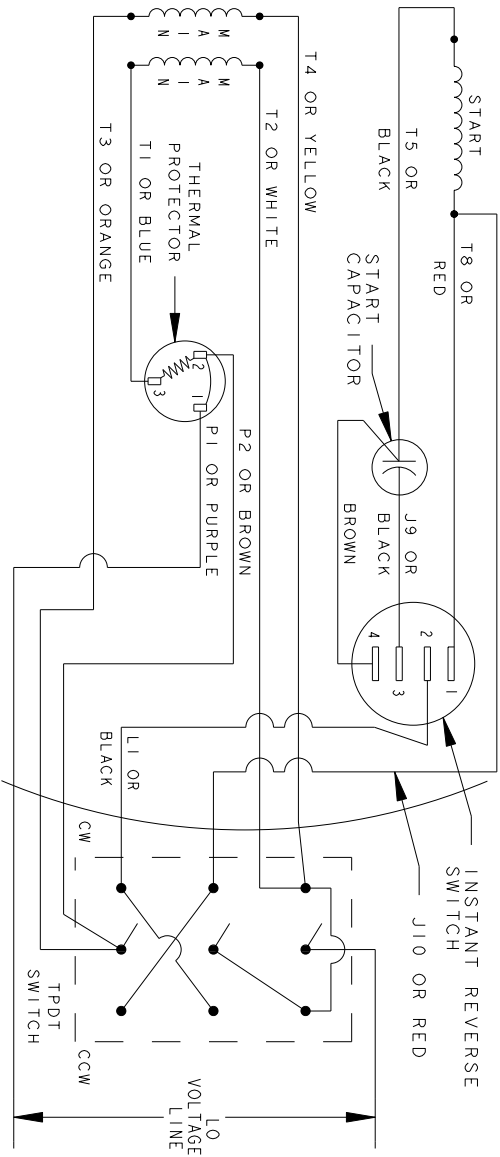
Electrical Type	Capacitor Start Induction Run	Starting Method	SM
Poles	4	Rotation	Instant Reversible
Mounting	Rigid Base	Motor Orientation	ANY
Drive End Bearing	BALL	Opp Drive End Bearing	BALL
Frame Material	Rolled Steel	Overall Length	11.83 in
Frame Length	6.55 in	Shaft Diameter	0.63 in
Shaft Extension	1.88 in		
Outline Drawing	52A107728P1	Connection Diagram	52A106829

This is an uncontrolled document once printed or downloaded and is subject to change without notice. Date Created: 10/08/2018

THIRD ANGLE PROJECTION		REVISIONS		
REV.	DESCRIPTION	DATE	APPROVED	
5	UPDATED TO RBC FORMAT	01/10/06	MAM	



INSTANTLY REVERSIBLE STERNS IR SWITCH DUAL VOLTAGE - TYPE KC - THERMAL PROTECTOR



NOTE#1 - WHEN MORE THAN ONE CAPACITOR IS USED, CONNECT IN PARALLEL.
NOTE#2 - DO NOT APPLY HI-POT VOLTAGE FROM LEAD TO LEAD.
TIE ALL LEADS TOGETHER AND HI-POT TO GROUND.
IF HI-POT LEAD TO LEAD IS PERFORMED, DISCONNECT SWITCH PRIOR TO HI-POT OPERATION. FAILURE TO DO THIS COULD RESULT IN ELECTRONIC COMPONENT IN S.S. SWITCH.

REF. DIAG. - NONE

CONNECTION LABEL - 52X332988

SIGNATURES		DATE	TITLE	
MODEL	M.D.P.	01/05/90	REGAL-BELOIT CORPORATION	
DETAIL	.	.	CONNECTION DIAGRAM	
CHECKED	.	.	FME: 5KC39QN9679Q	
ENGRG	.	.	52A106829	
MFG	.	.	REV 5	
FOR ADDITIONAL INFO REFER TO:	QUALITY	.	SCALE: 1.000 REF. No: .	
APPLIED PRACTICES	ISSUED	M.D.P. 01/05/90	SHEET 1 of 1	
DIMENSIONS ARE IN INCHES	SOLID MODEL: 52A106829			